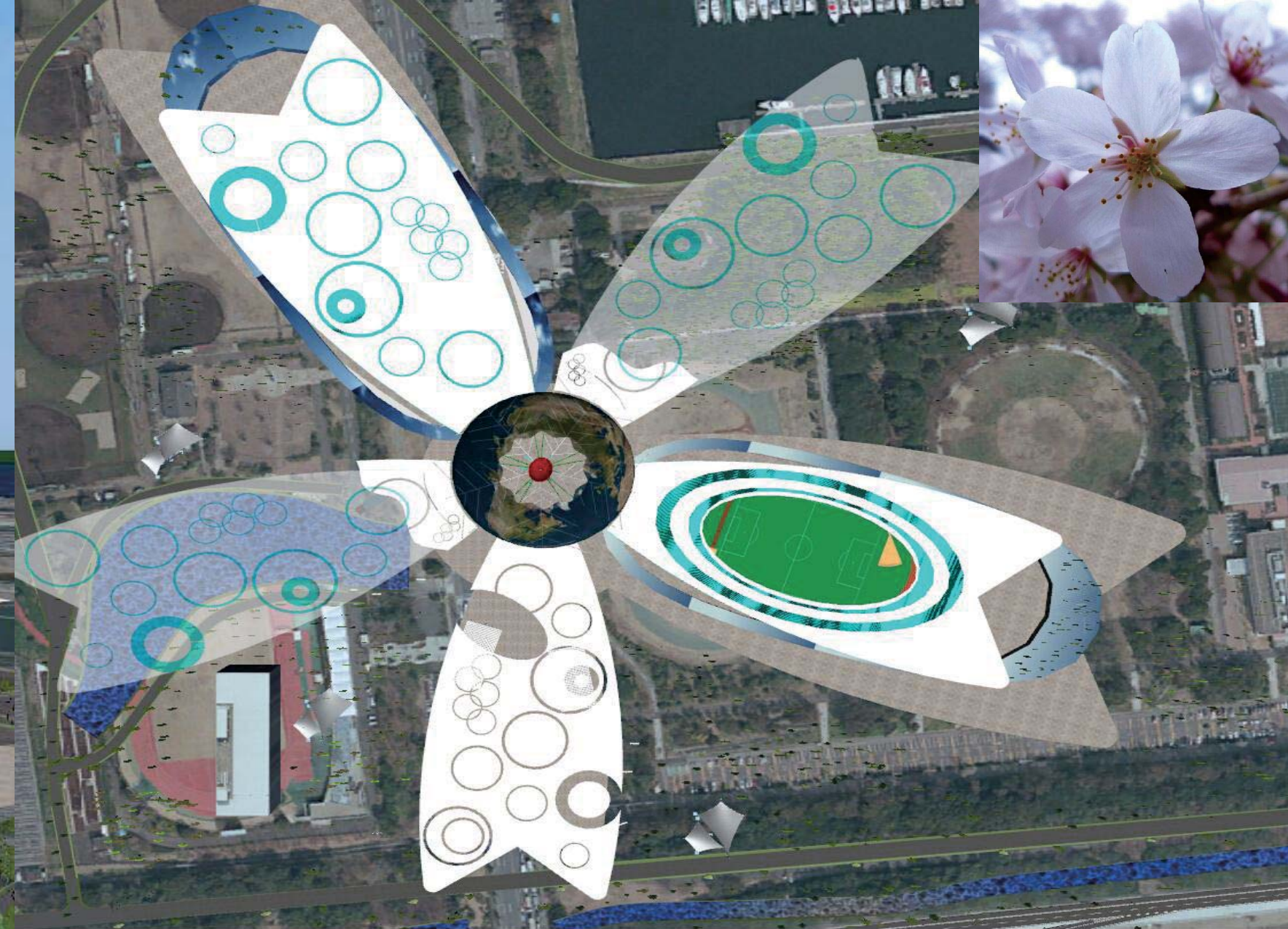
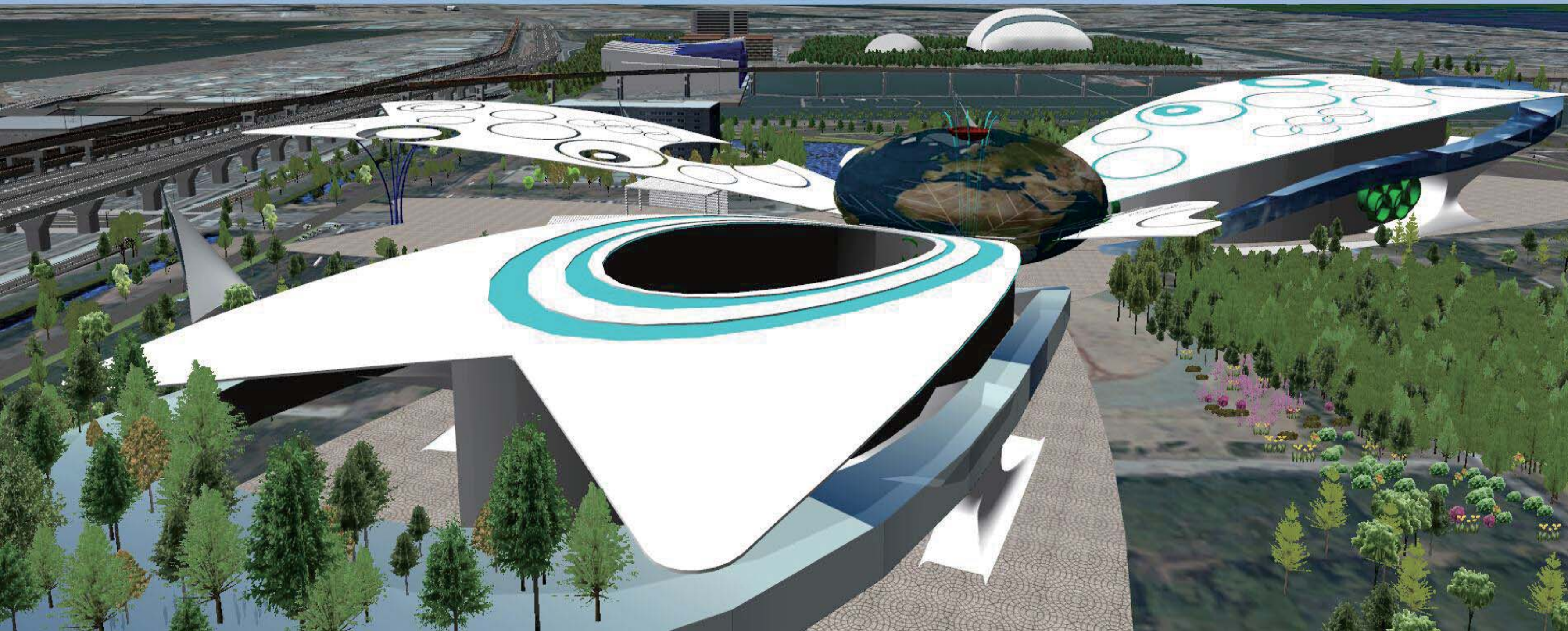


Green Cherry

As we all known cherry means a lot to Japanese, the unique stadiums that looks like cheery can show the sprit of Japanese to the world, which is pure, passion and noble. The topic about “green cherry” contains “energy accumulation ring”, forest soul and water circulation, it is presented by the cooperation of all “petals”. The cherry consist of forest, natatorium, main stadium, reclaimed water lake, service area, and the main torch. Every petal is differ from others and essential to the topic of green Olympic.

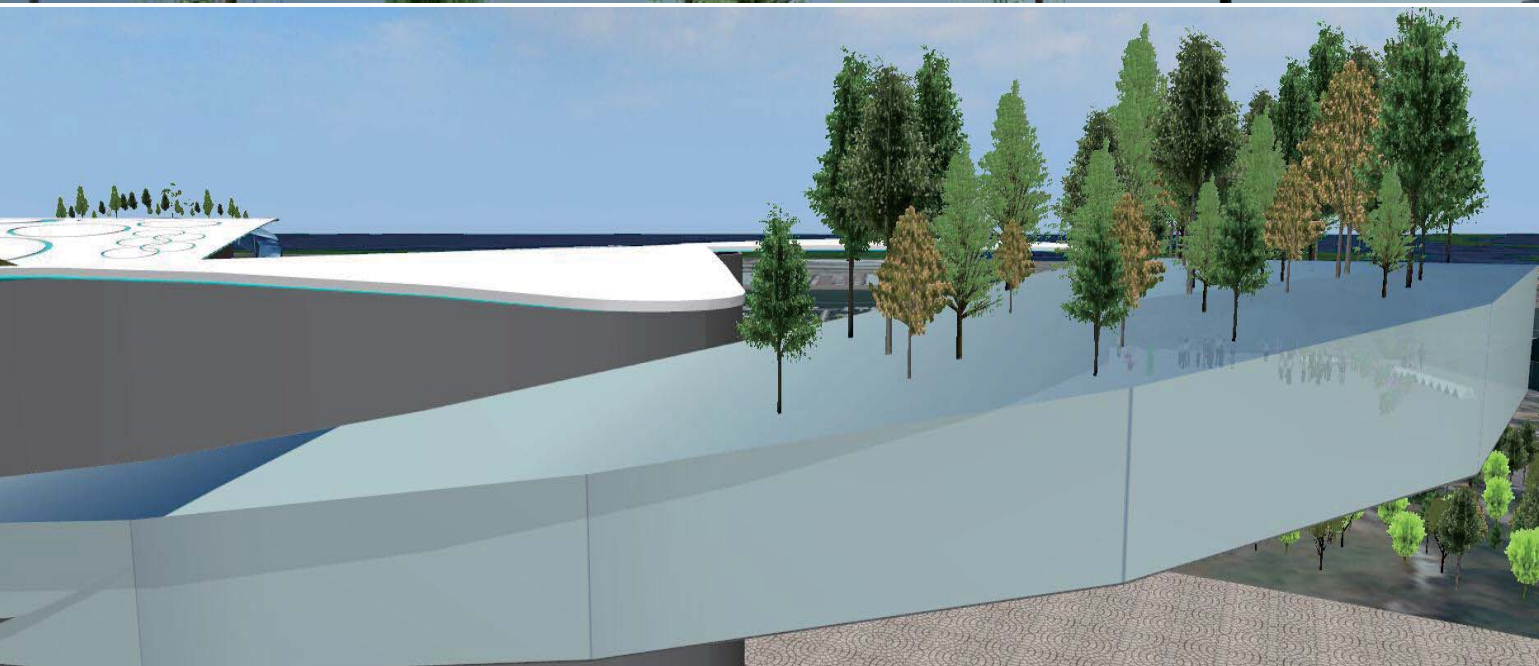
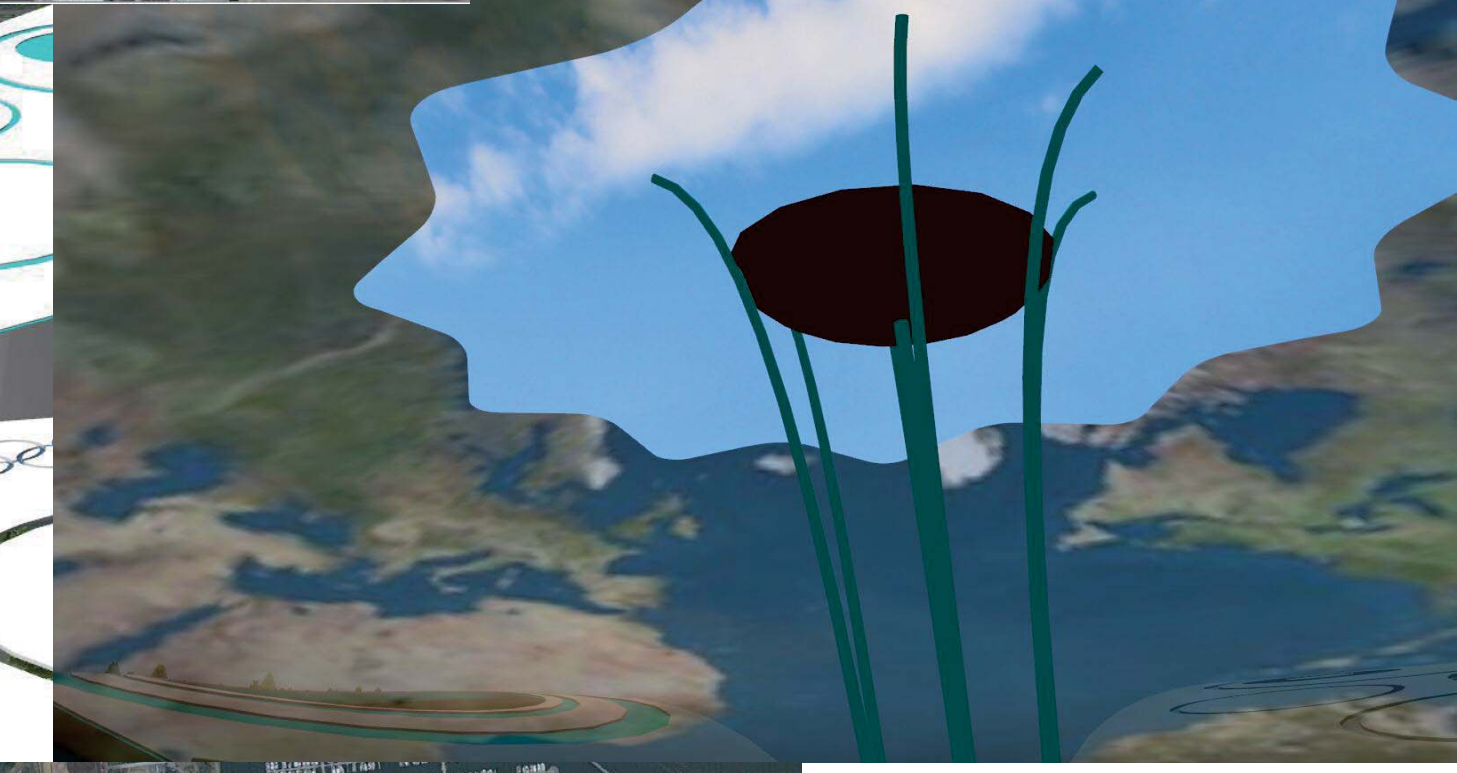


● The Cherry



The design of “cherry stadiums” is inspired by Japanese cherry. The cheery stadium can hold most sports competition of Olympic game tanks to the unique function of each petal.

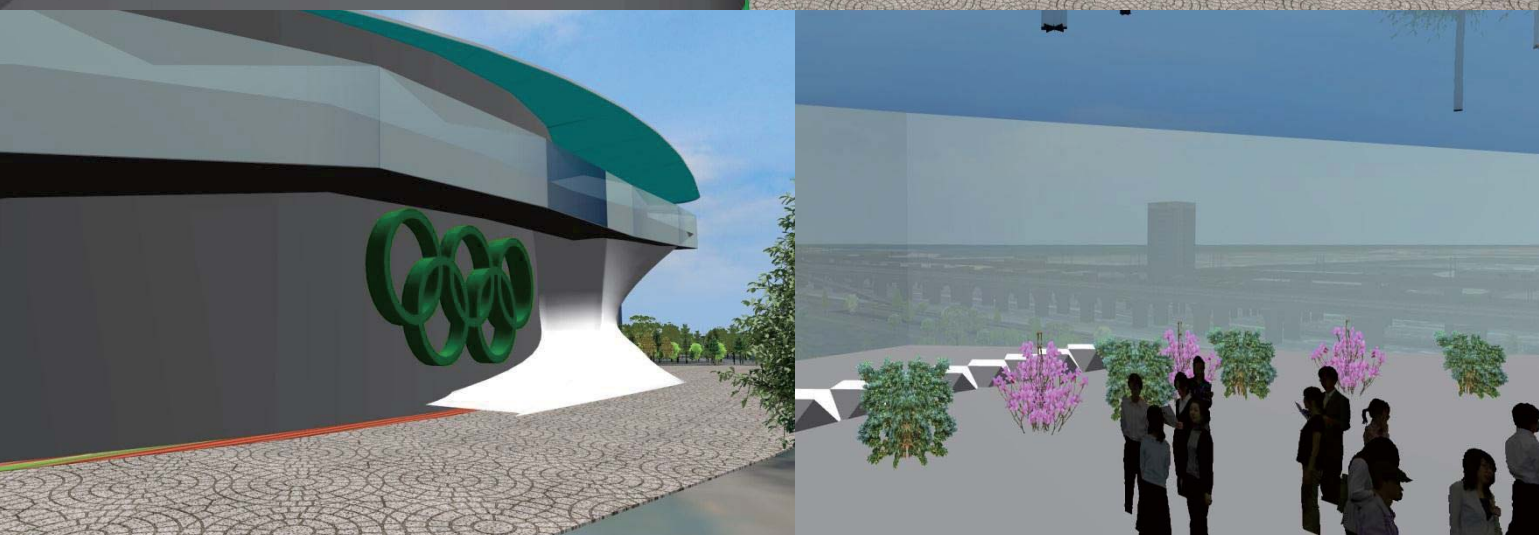
The most interest thing is the pistil and stamens which are used as main torch, it become a finishing touch as well. The semitransparent earth that protect the main torch represent solidarity and peace of the whole human being.



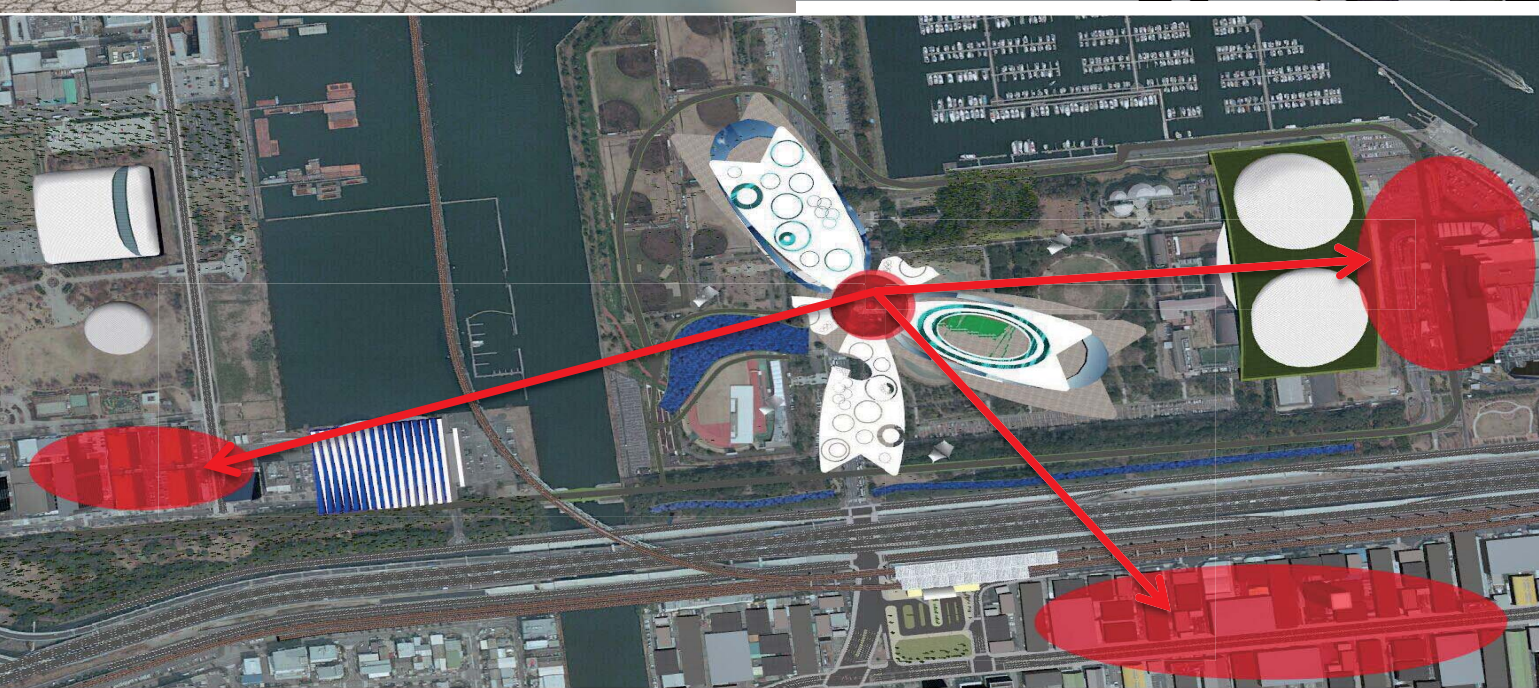
● Stadiums



Circular aisle around the stadium provides more than four entrances, it's important to evacuate in emergency such as terrorist attack and earthquake.



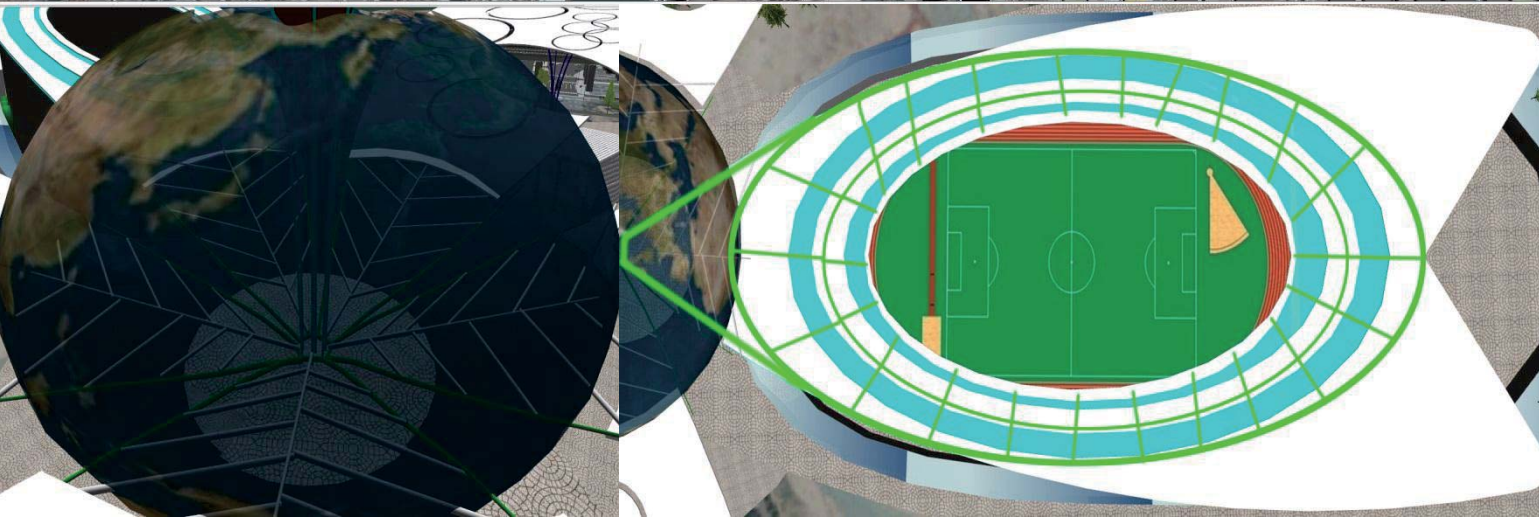
Translucent roof and wall will save energy, and visitors can enjoy plants at the top of it and beautiful scenery of the Olympic parkas through it as well



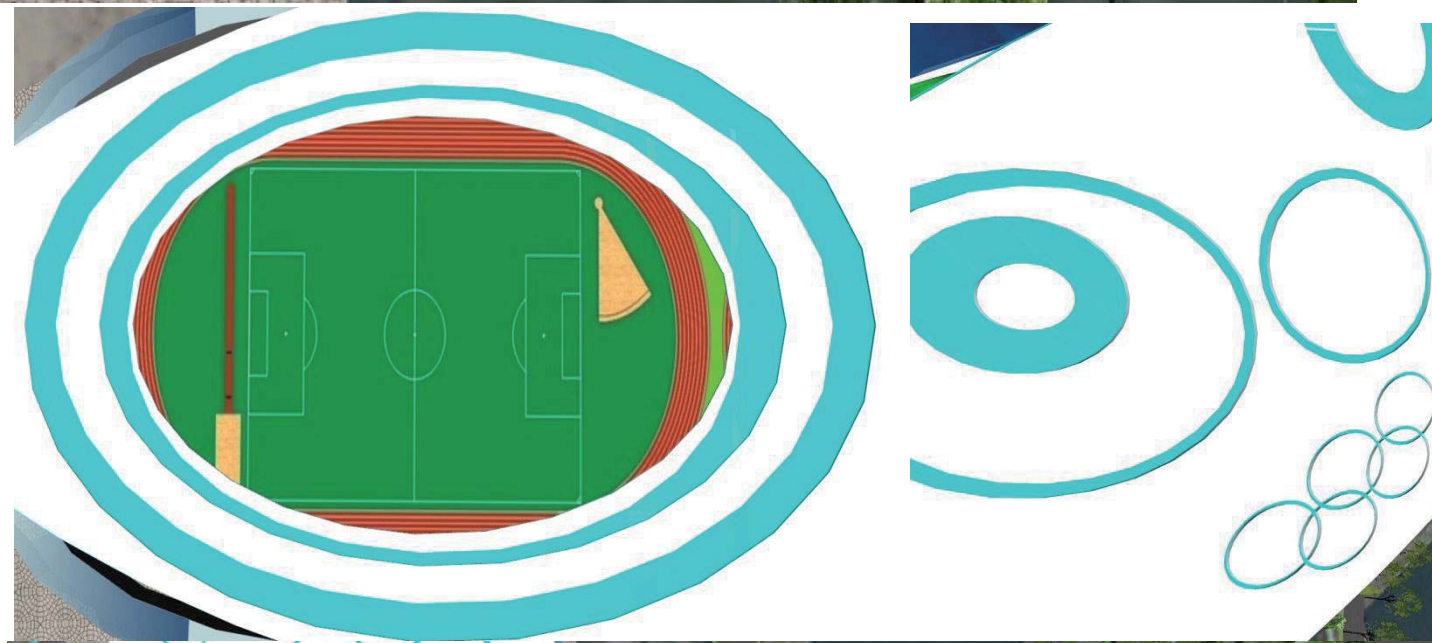
● Water-cooled



Cool water is pumped to tiny hose that installed at the roof through green hose in the picture, and collected to another green hose after absorb hot.



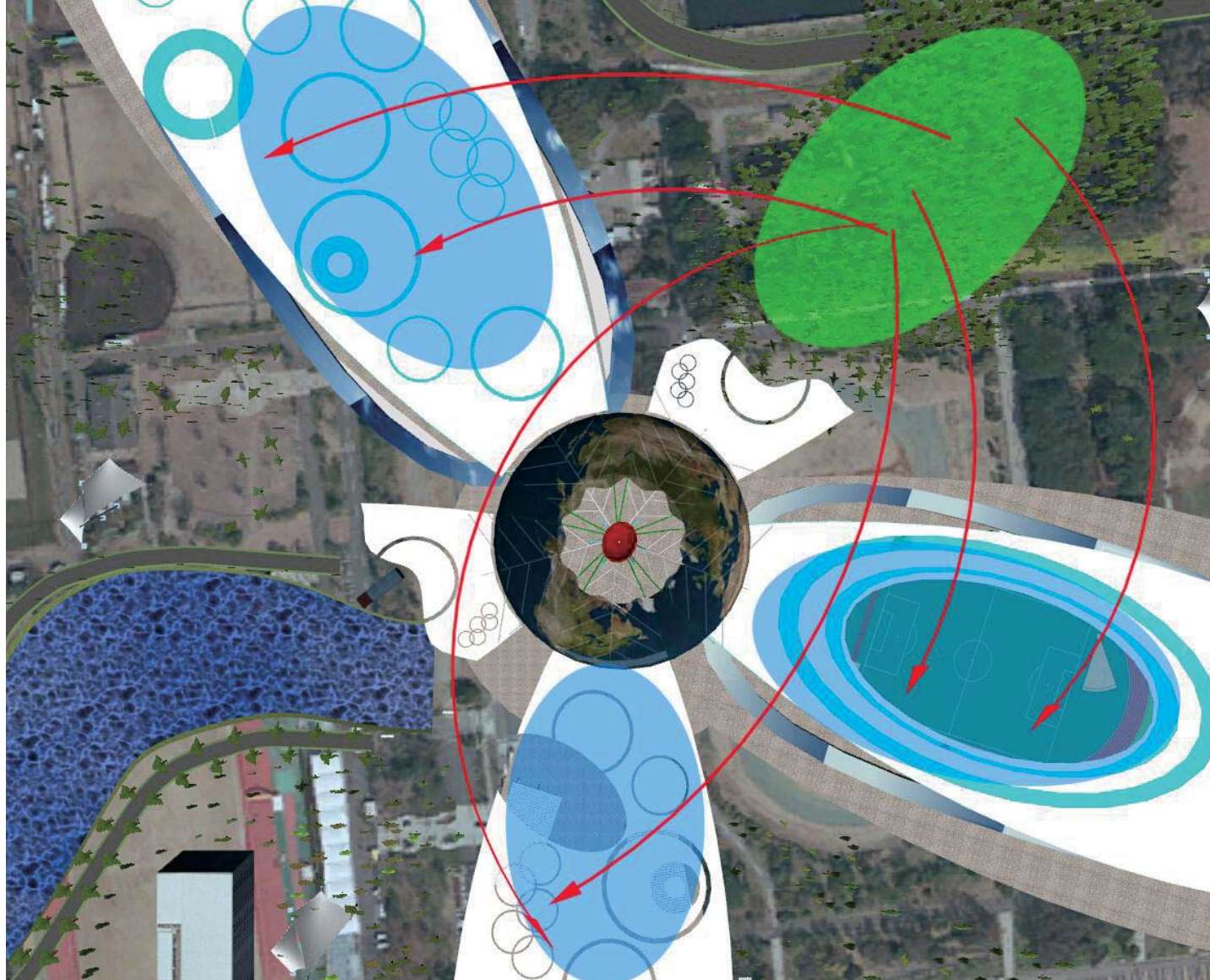
Hot water from the system is available to bathroom, hotel and swimming pool. As red area show in the picture.



● Energy ring



Lots of energy rings at the top of stadium roof can absorb solar and work as generator to light itself at night, more important is that it can cooling air and make the cherry become a big “air pump”.



● Forest soul



The fresh and fragrance air made by trees in forest is the key to refresh air in stadiums and make visitors feel comfortable at the cherry. temperature difference between stadiums and forest which made by the energy ring makes it work like kind of “air pump” that pump the air in forest to everywhere of the cheery.

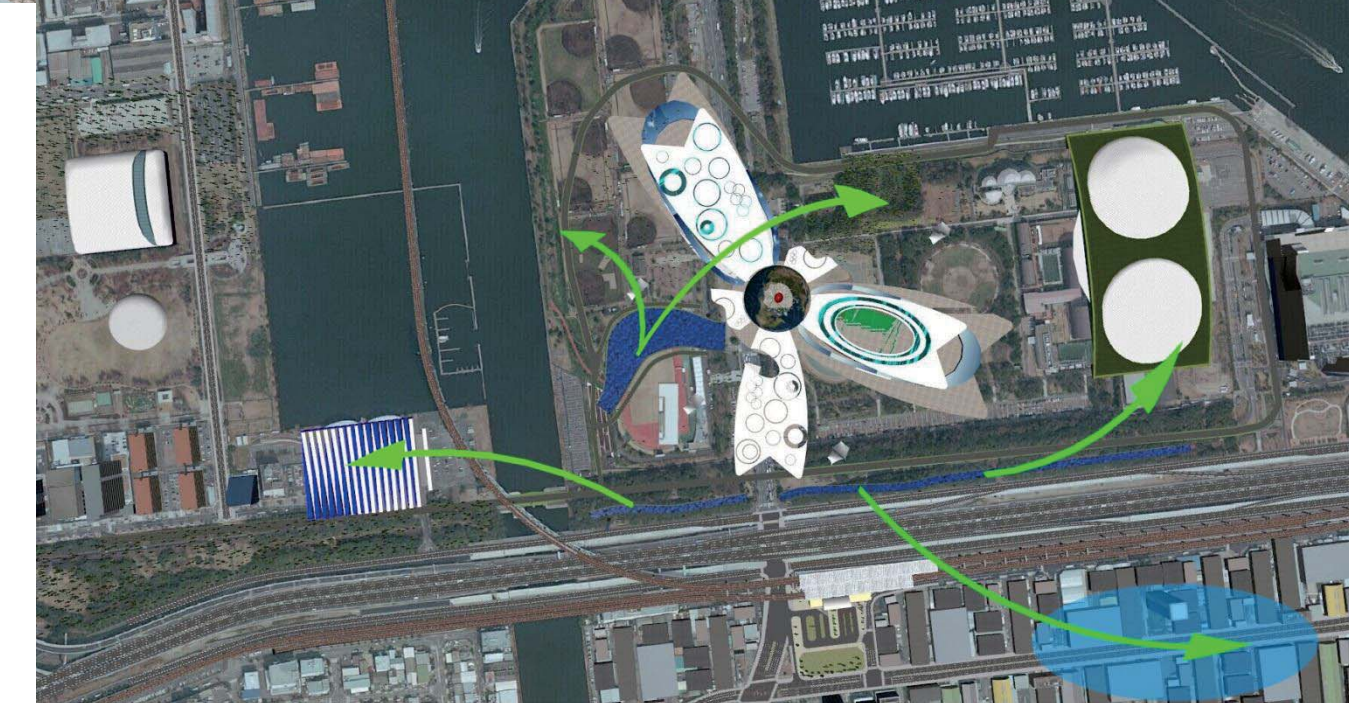
On the other hand the lake breeze can enhance the effect of “air pump”.



● Forest



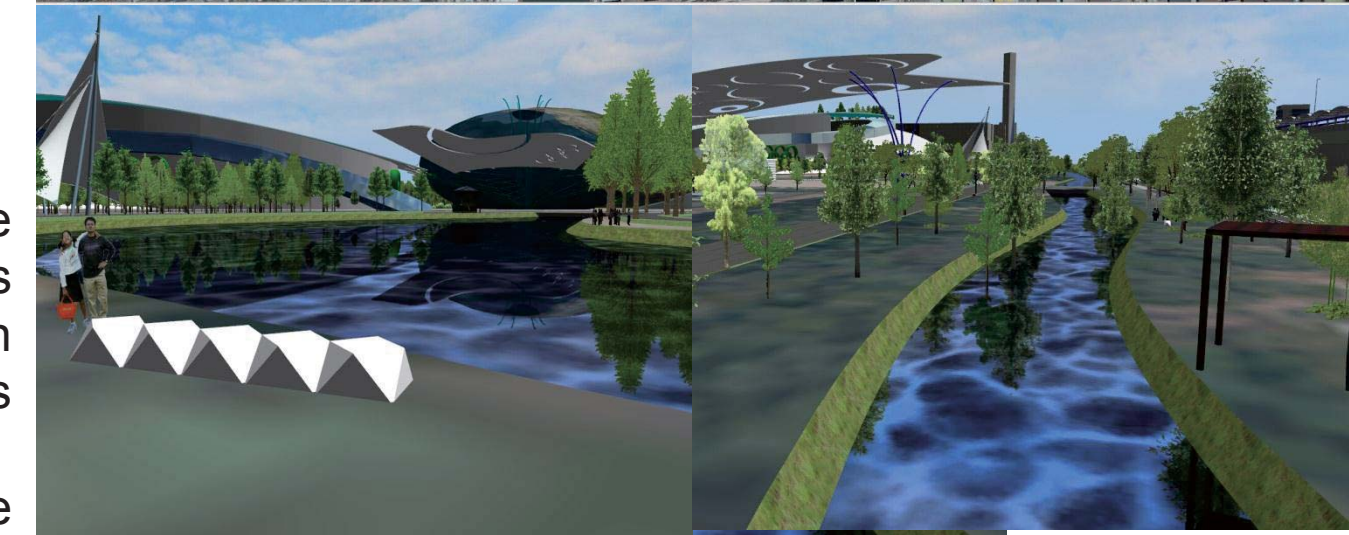
The forest park of cherry not only available for visitors but can change the atmosphere of cherry. So it's very smart to planting some unique and fragrance plants.



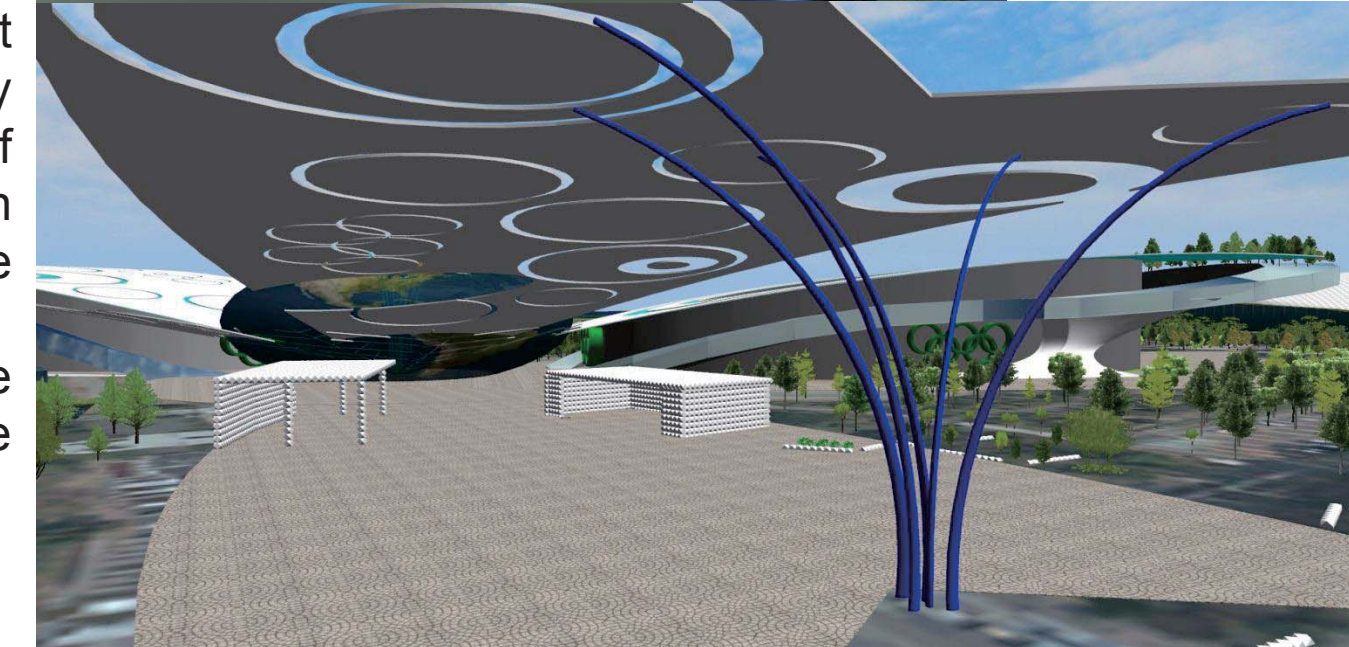
● Circulating water



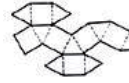
Sewage from cherry park is discharged into reclaimed water lake after purified. Green line shows the use of the multi-purpose reclaimed water.



Thanks to the circulation of watercourse, reclaimed water is purified again by microorganism and plants in watercourse, by the way water and kinds of plants are beautiful scenery as well.



● Polyhedron



The service area which be covered by “energy rings roof” will provide drinking water, events guide, emergency medical service and so on More important the temporary constructions in service area are changeable, it could be rebuilt in hours thanks to the flexibility of hollow polyhedron. Polyhedron which made by reclaimed material could be used as chair or even floor tiles after dismantled at the end of Olympic game.

