

# world16

12th VR Summer Workshop

**7/5-7/8 2021**

Integrating Street/ Road Lighting tools into UC-win/road

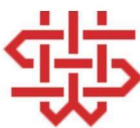
Senior Lecturer –Dr. Rebeka Vital

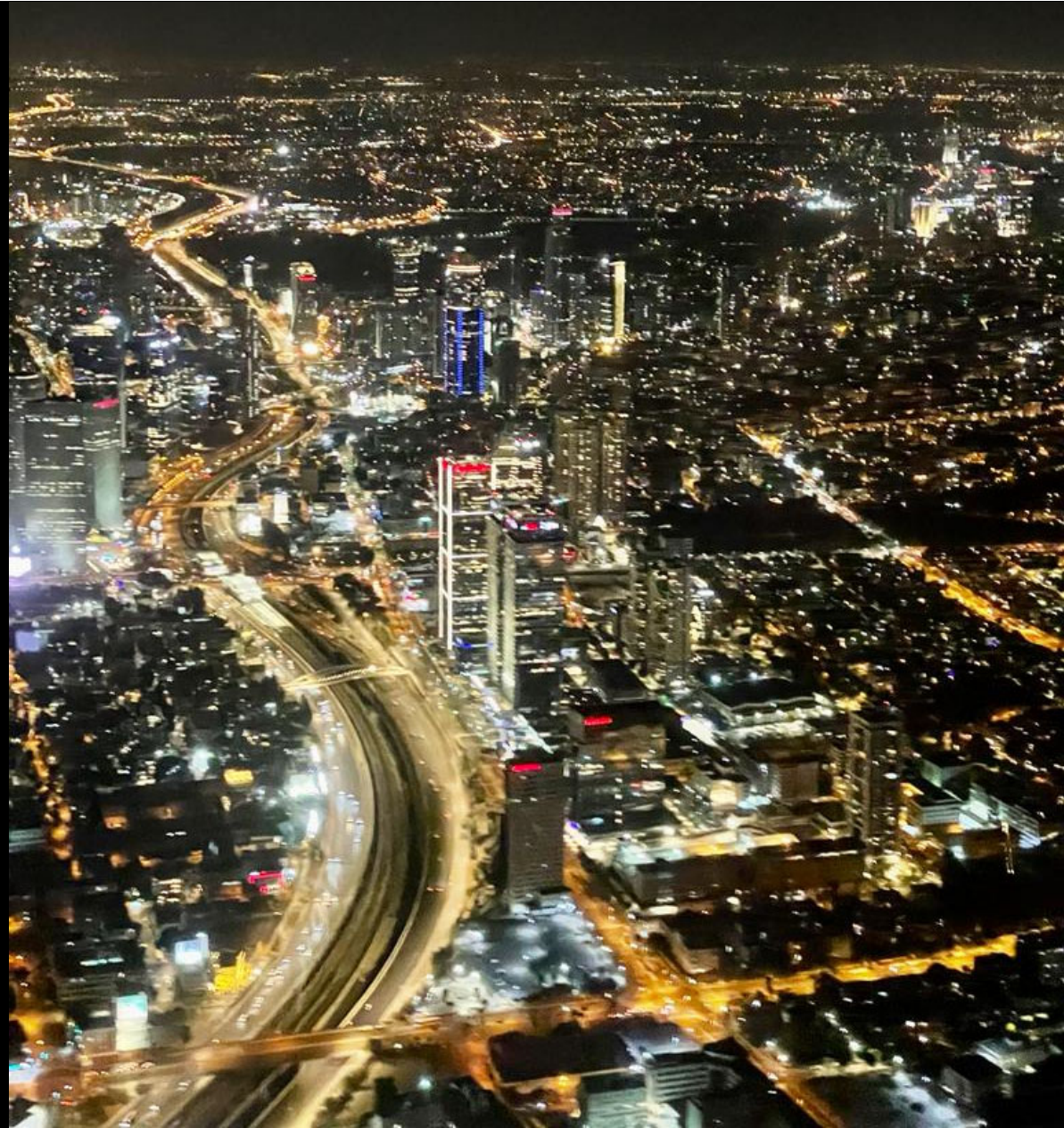
Shenkar. Design. Engineering.

Arts



 FORUM 8

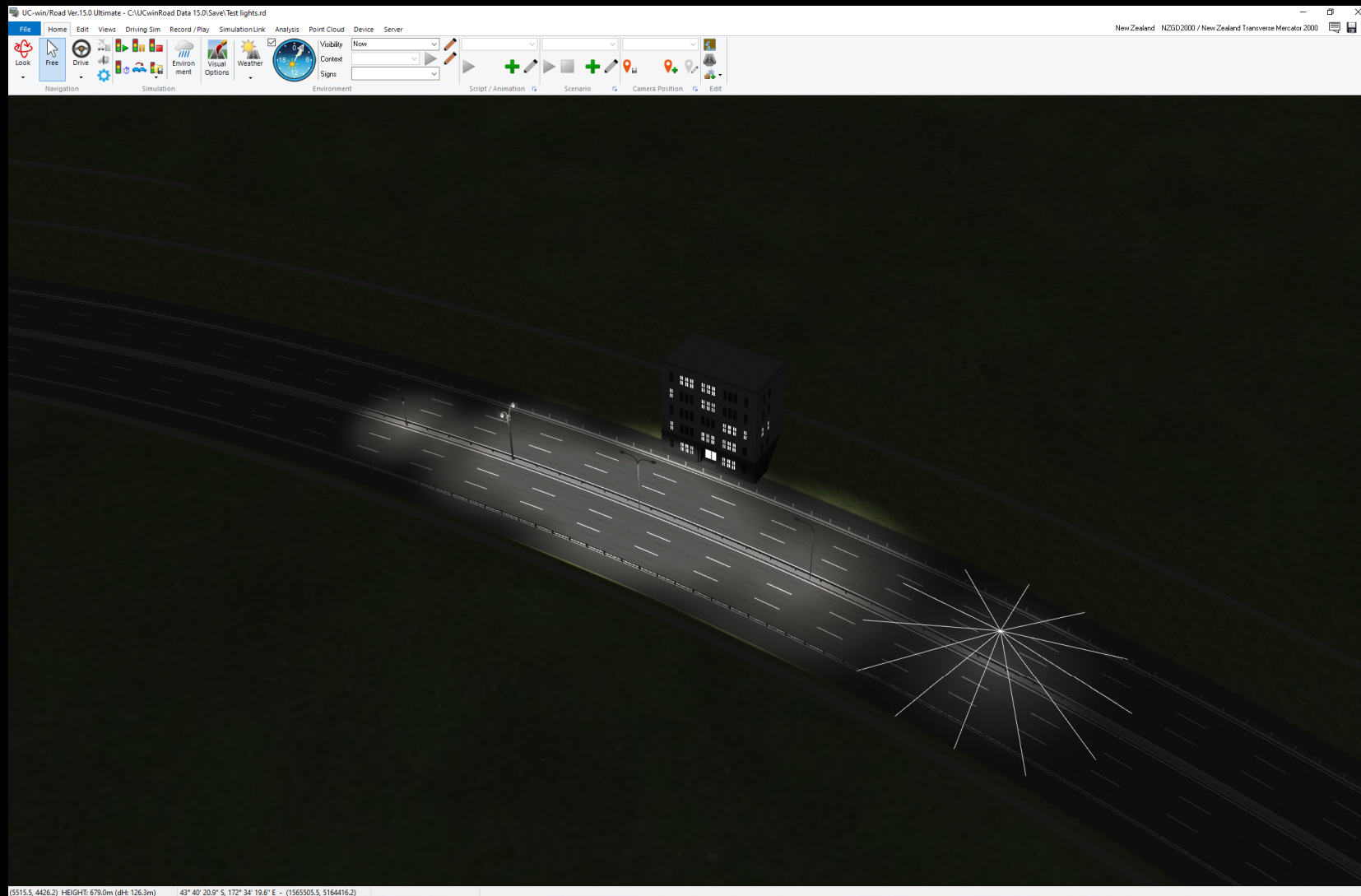




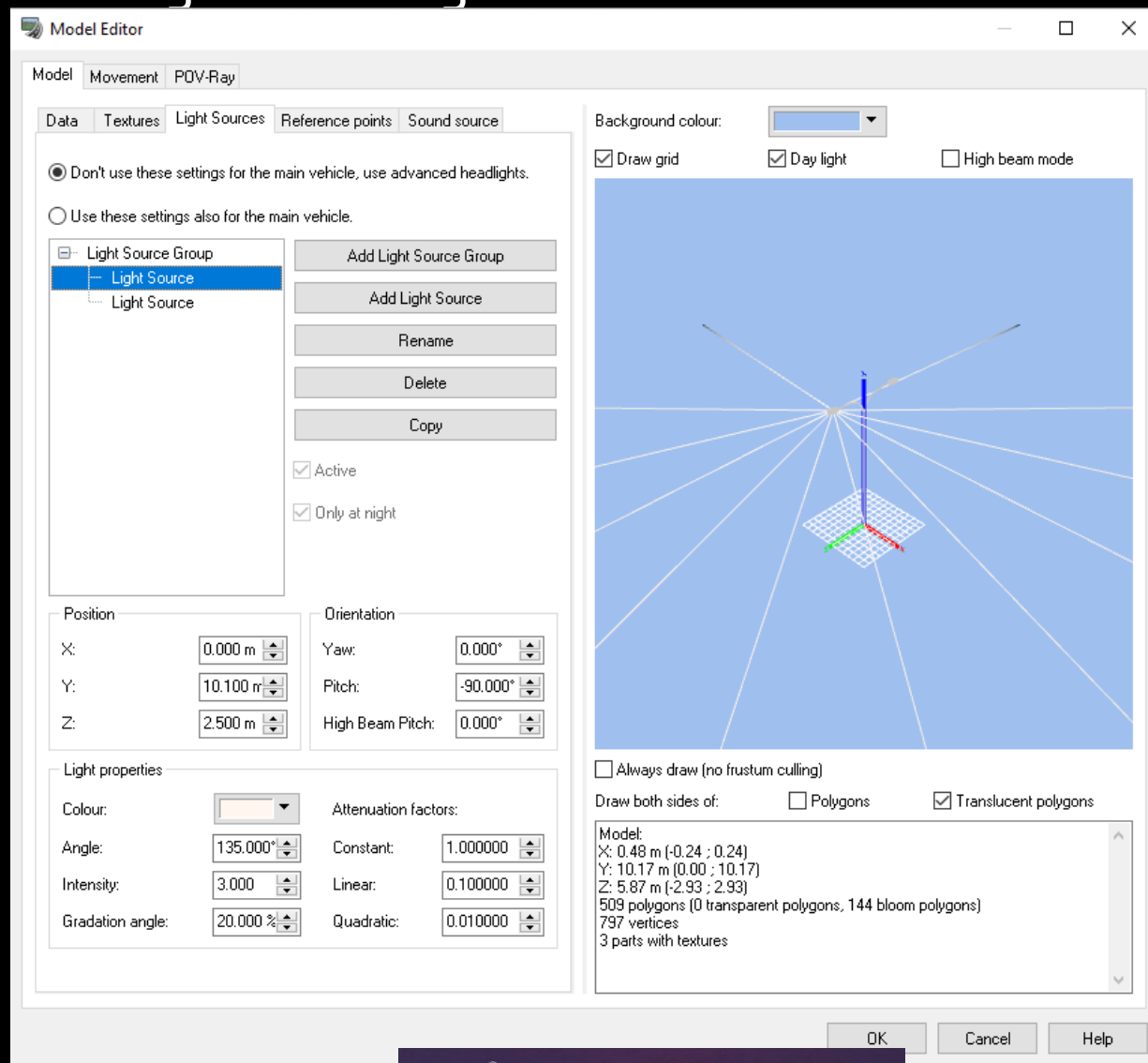
# Integrating Street Lighting tools into Ucin/road



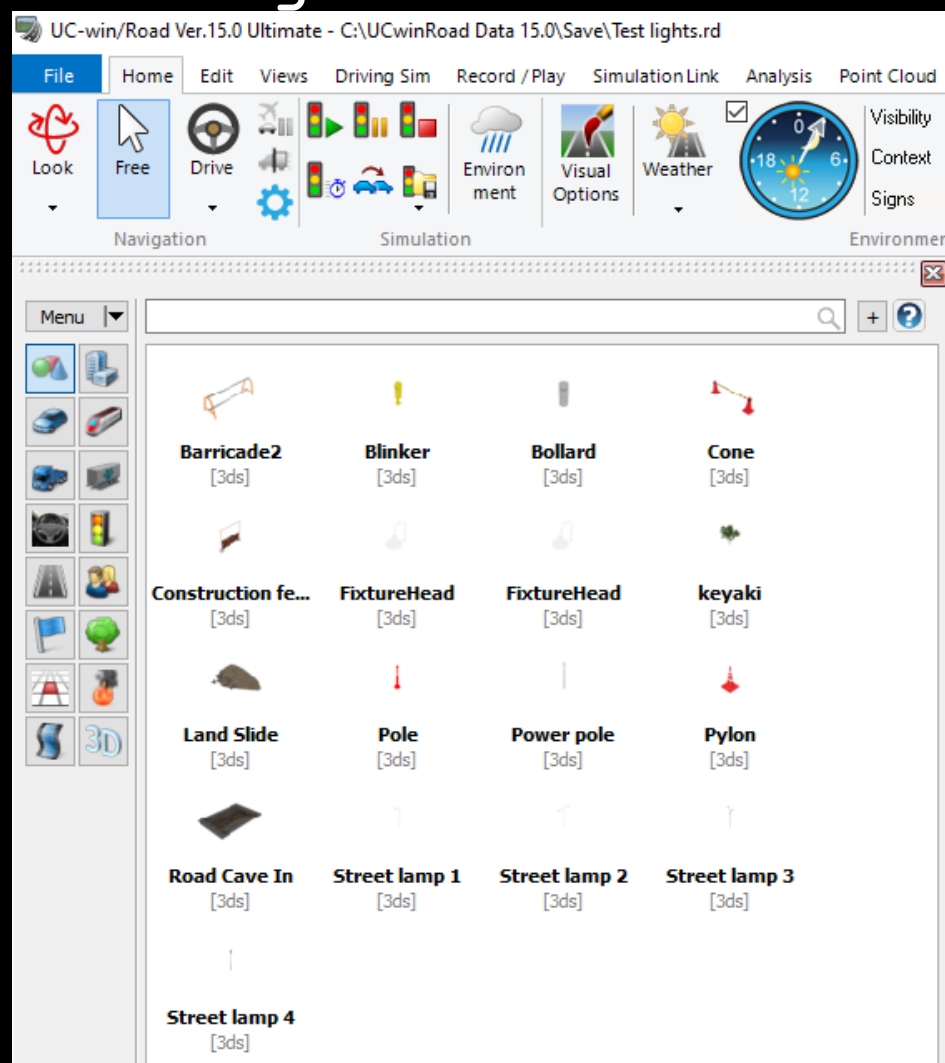
# Working with Light fixtures in Ucin/Road



# Working with Light fixtures in Ucin/Road



# Working with Light fixtures in Ucin/Road



# Proposal



Information

Downloads

Accessories

Service



## 84481 K3

### Pole top luminaire

Quotation text / txt



Quotation text (neutral) / txt



The technical data given in the instructions for use, product data sheets and quotation texts refer to the products manufactured as of the date of publication. We are constantly working on making our products more powerful and efficient. For this reason there may be minor changes to the actually delivered product.

### Planning aids

	DIALux-ULD	EULUMDAT	IES
84481 K3	→ ↓	↓	↓

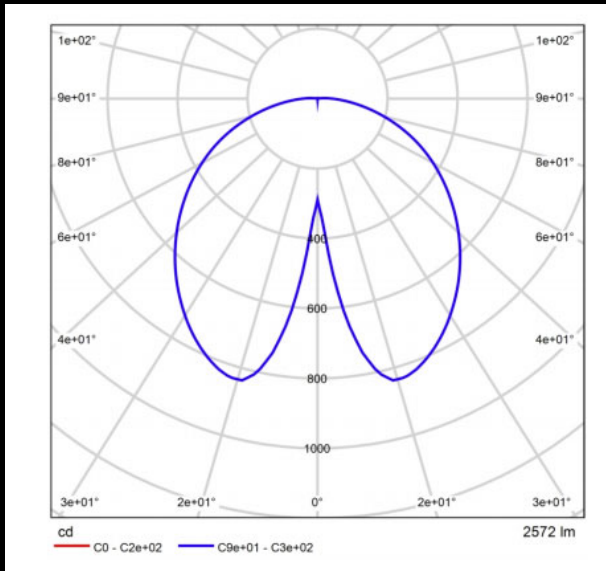
Autodesk Revit 2017 Family File / rfa



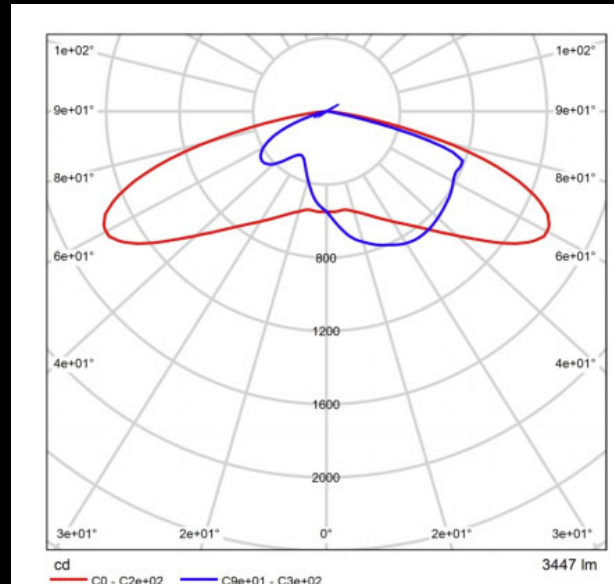
Insert photometric files from Lighting Manufacturers

 **FORUM 8**

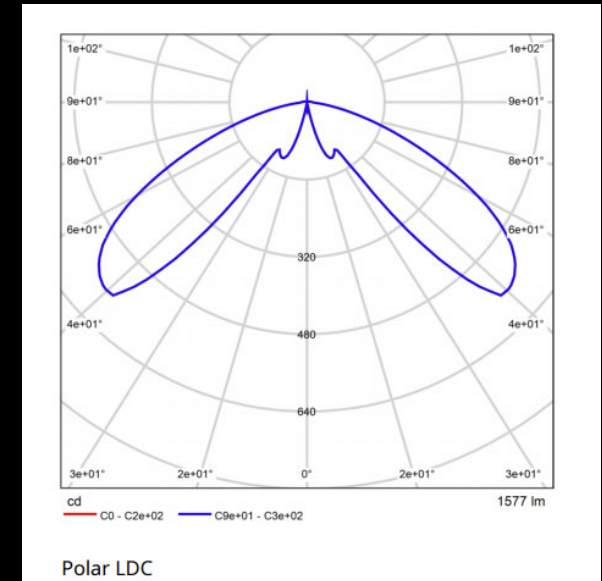
# Sample Files



Post 1



Post 2



Bollard





File Home Edit Views Record / Play Analysis Debug

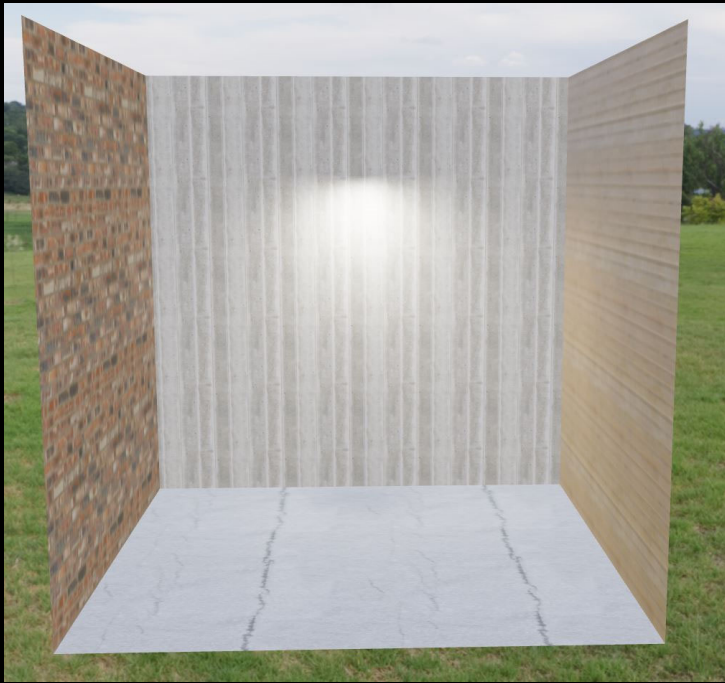
Plan View Library Draft Mode Patch Street Map Section Side Objects Obstructions Surfaces OffRoad Bumps

Network Flightpath Head light Options Street lights Generator Connections Vehicle Groups Create Zone Create Building Create Forest Download Features

Scene Terrain Road Pedestrian Flightpath Headlights Traffic Zone Editing



# VR-next



VR | NEXT™

Open gITF model

Showcase



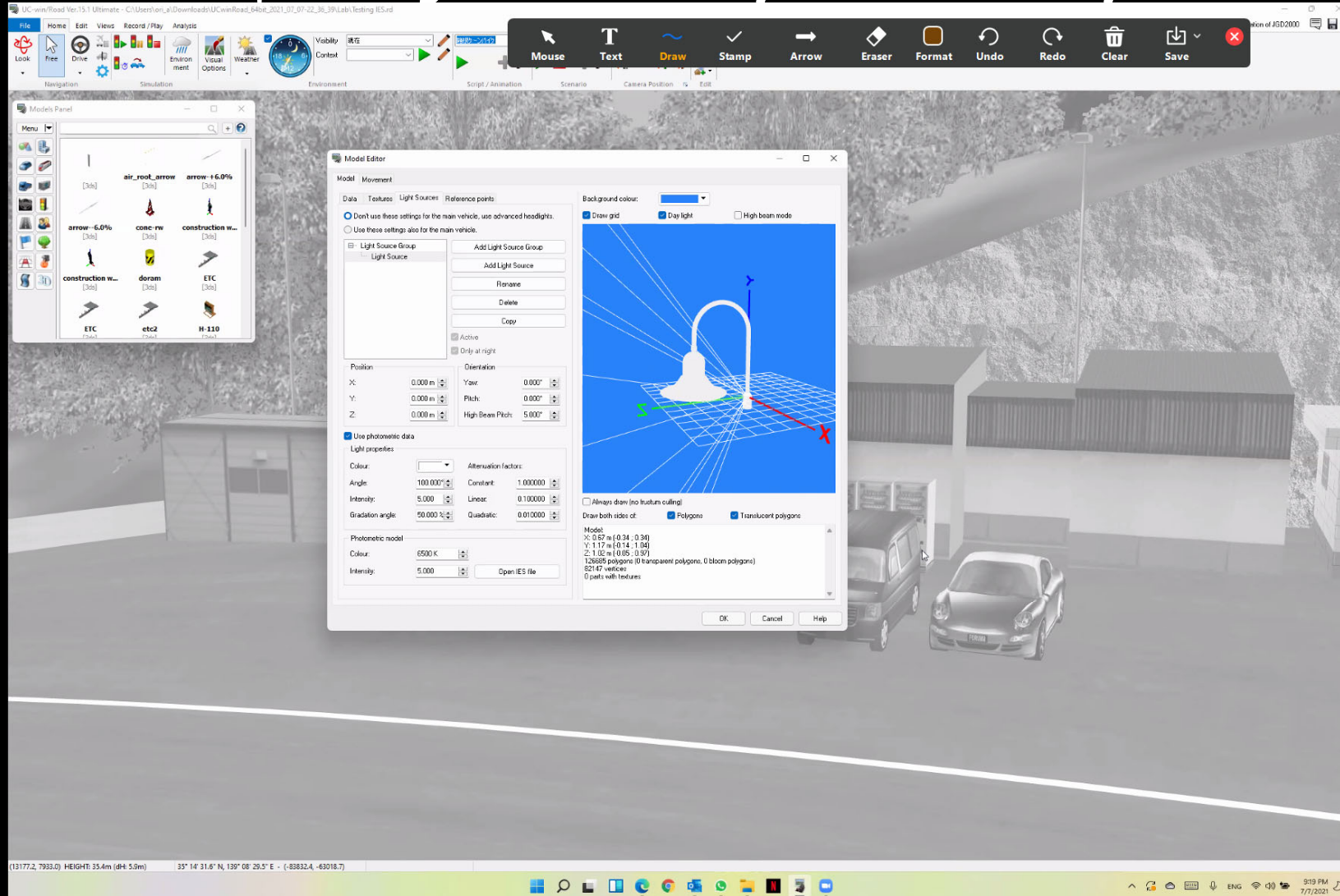
← Collapse menu

Settings

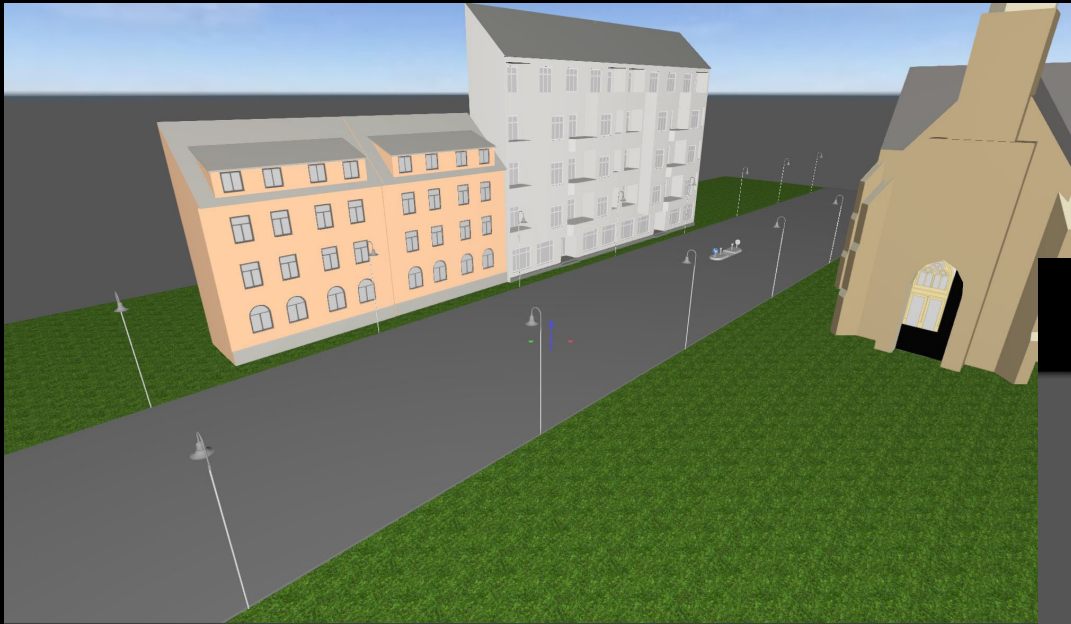
About gITFViewer

Exit

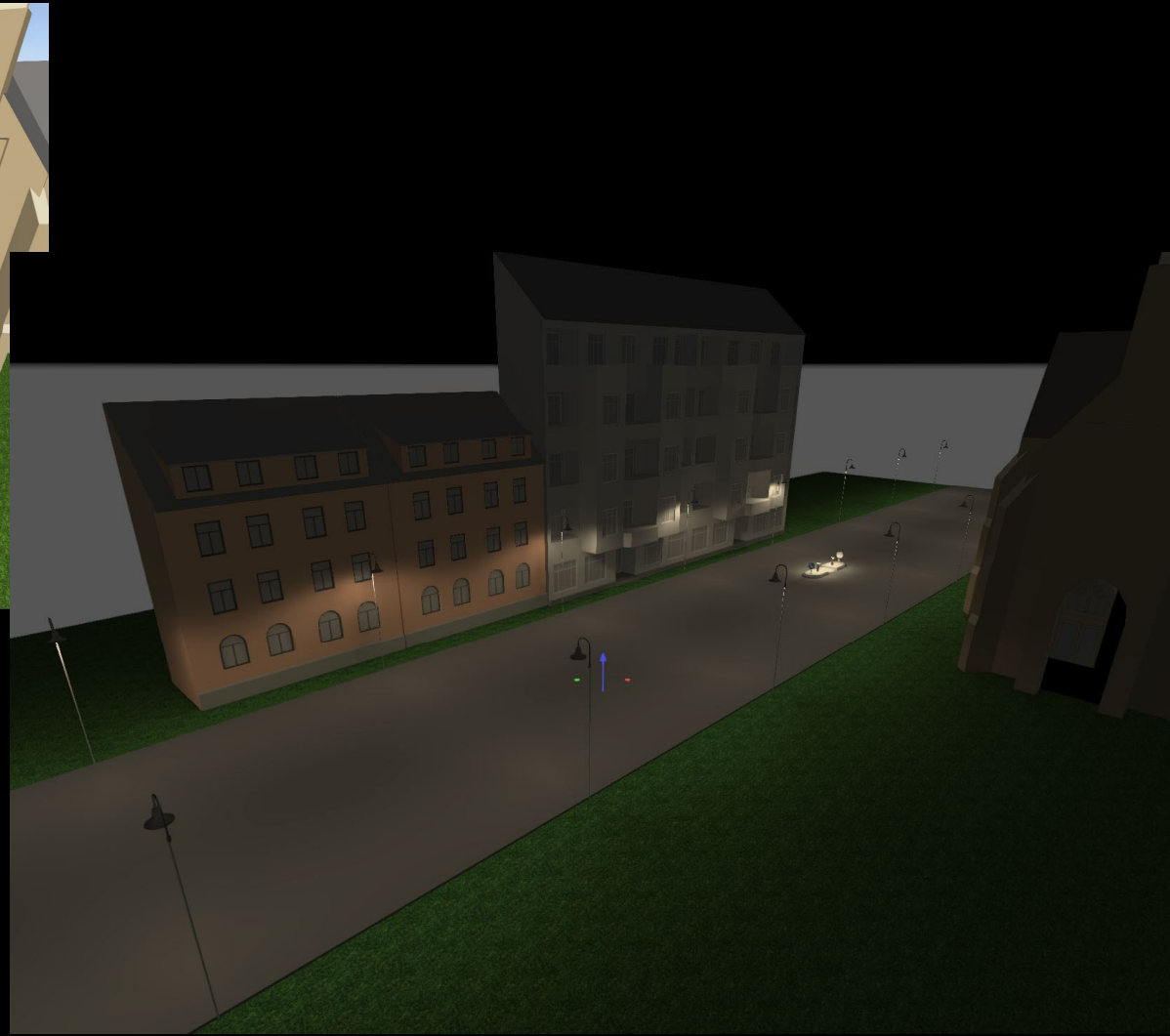
# Importing Photometry & Geometry



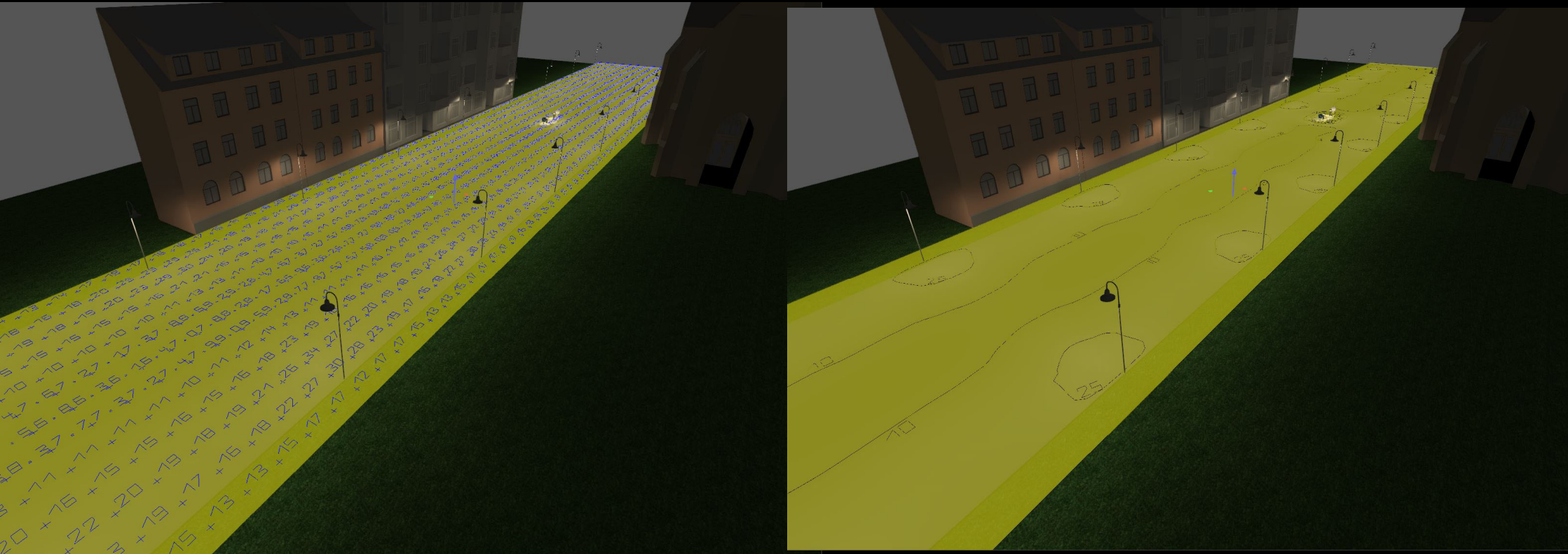
# Future Development



Creating Lighting simulations  
Radiosity?

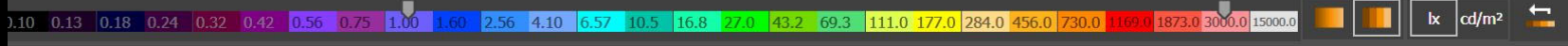
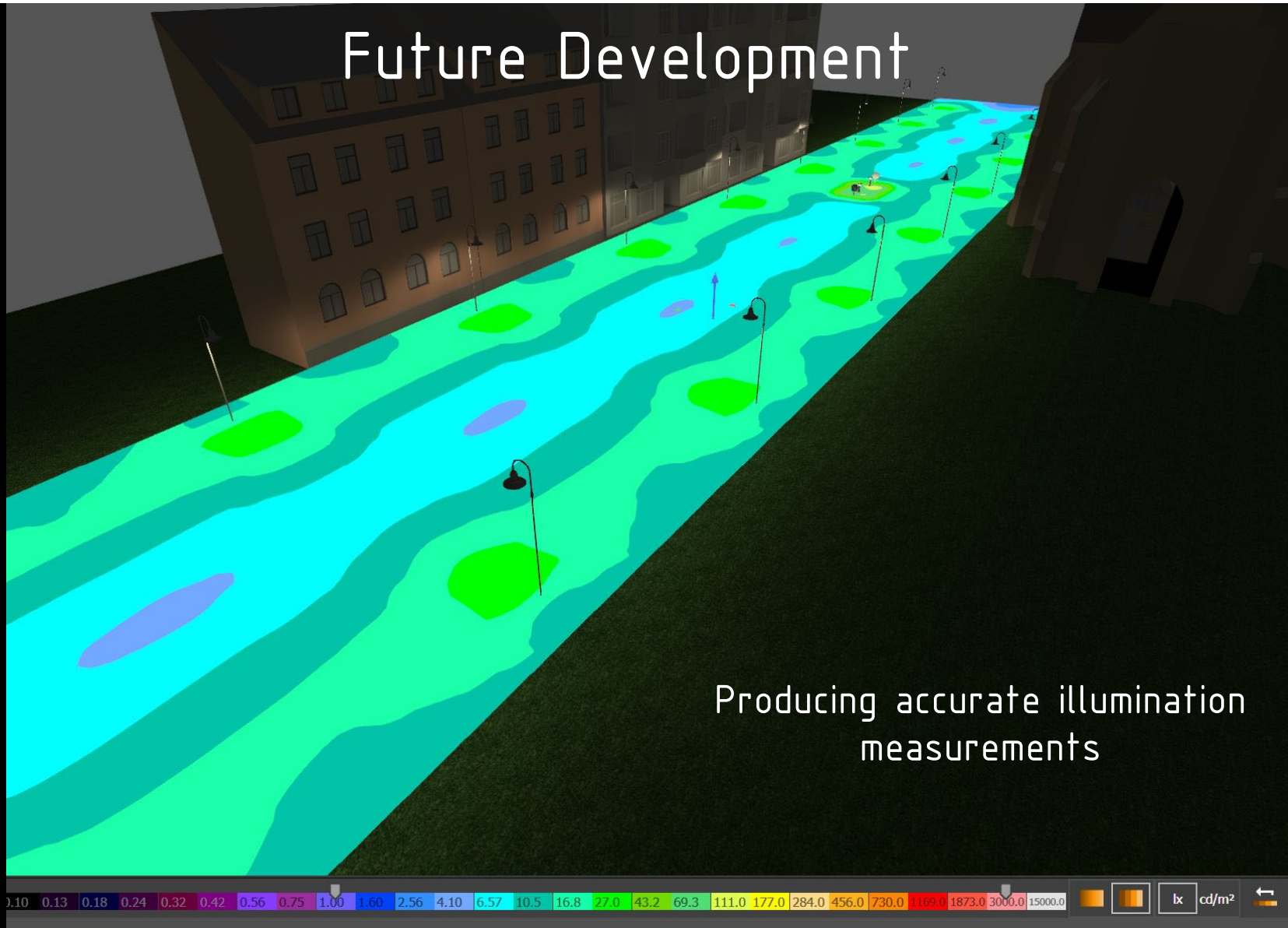


# Future Development



Producing accurate illumination  
measurements

# Future Development



# Future Development



Visualization of the photometry