

Connecting Yumenoshima

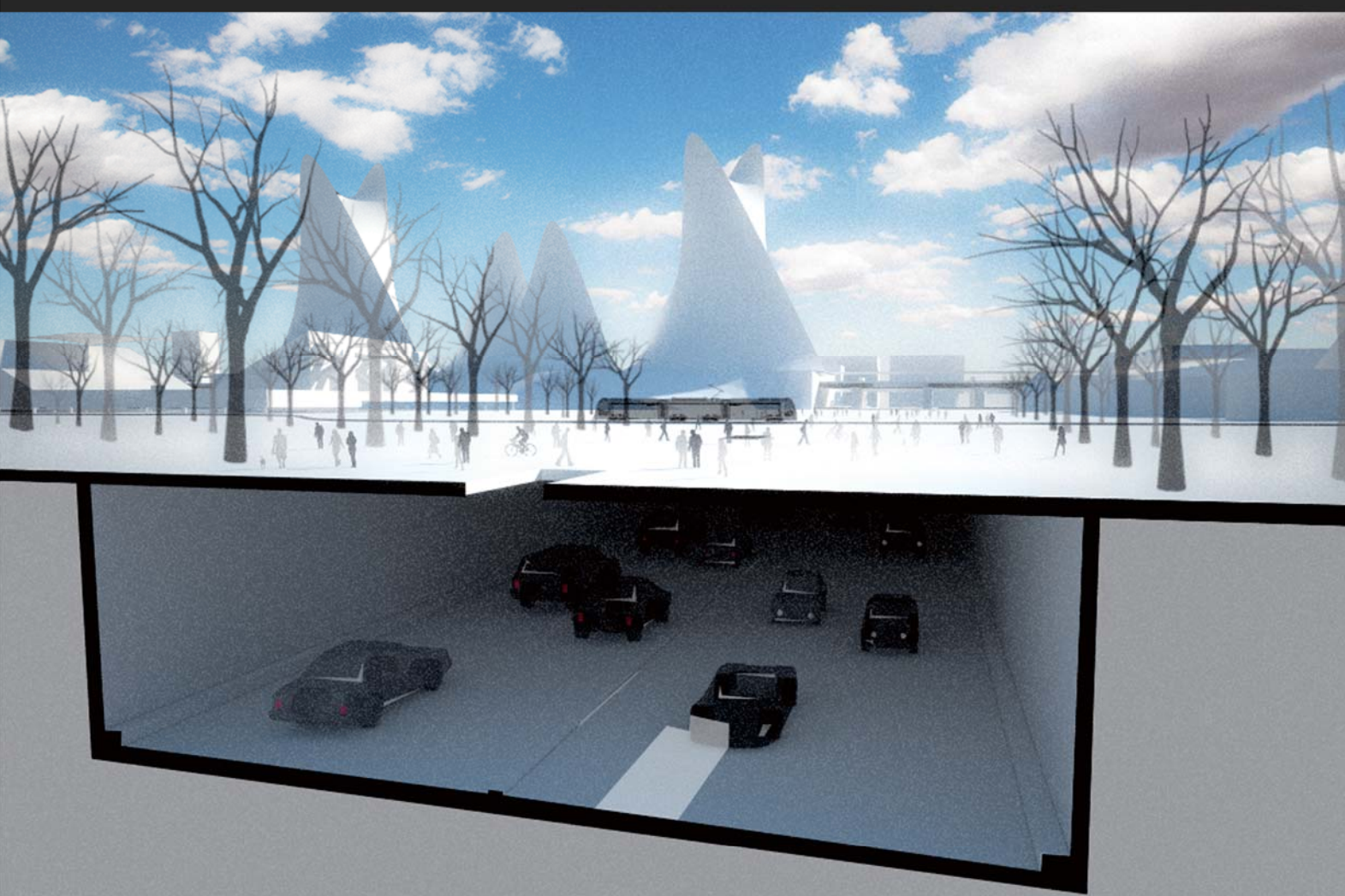
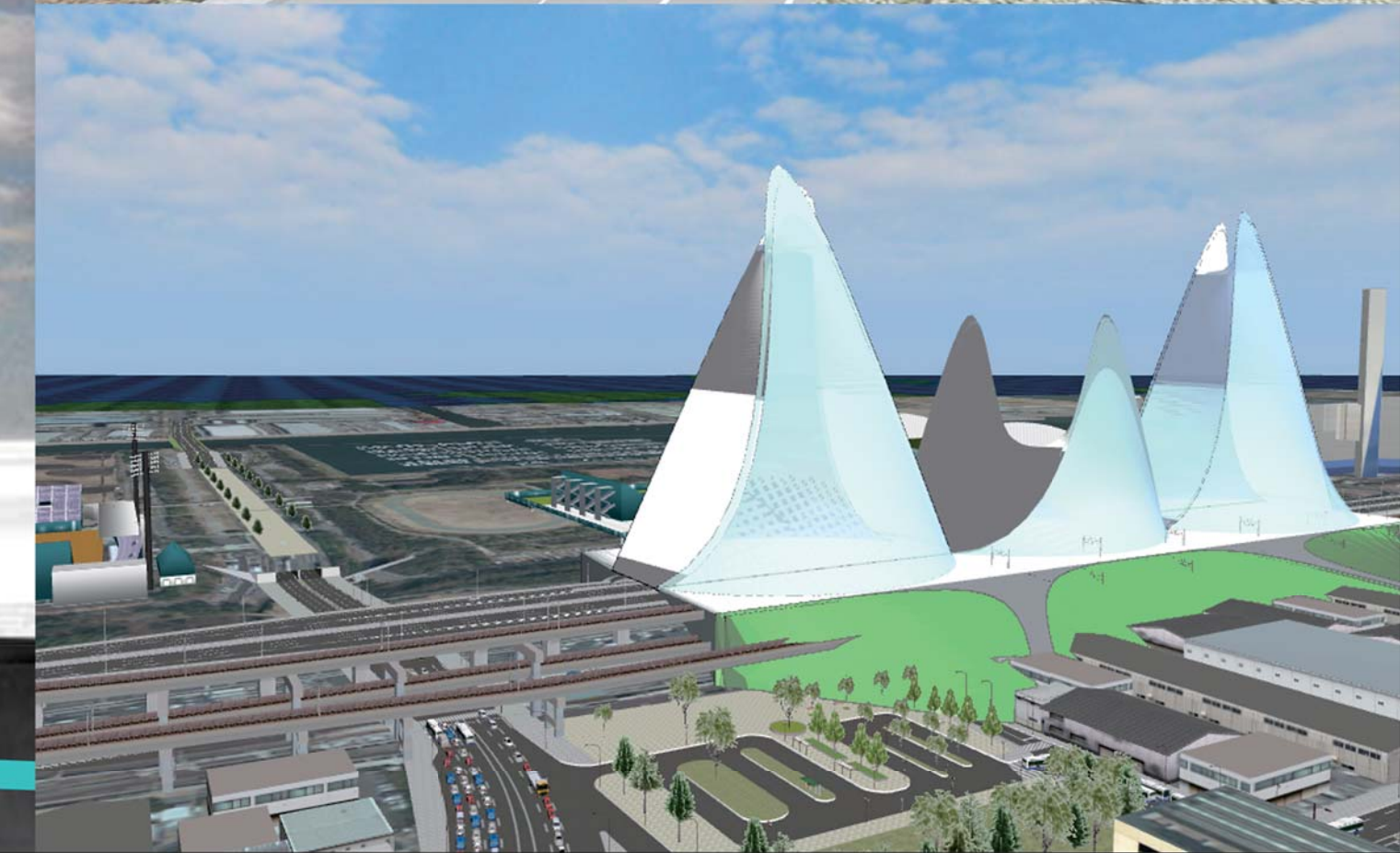
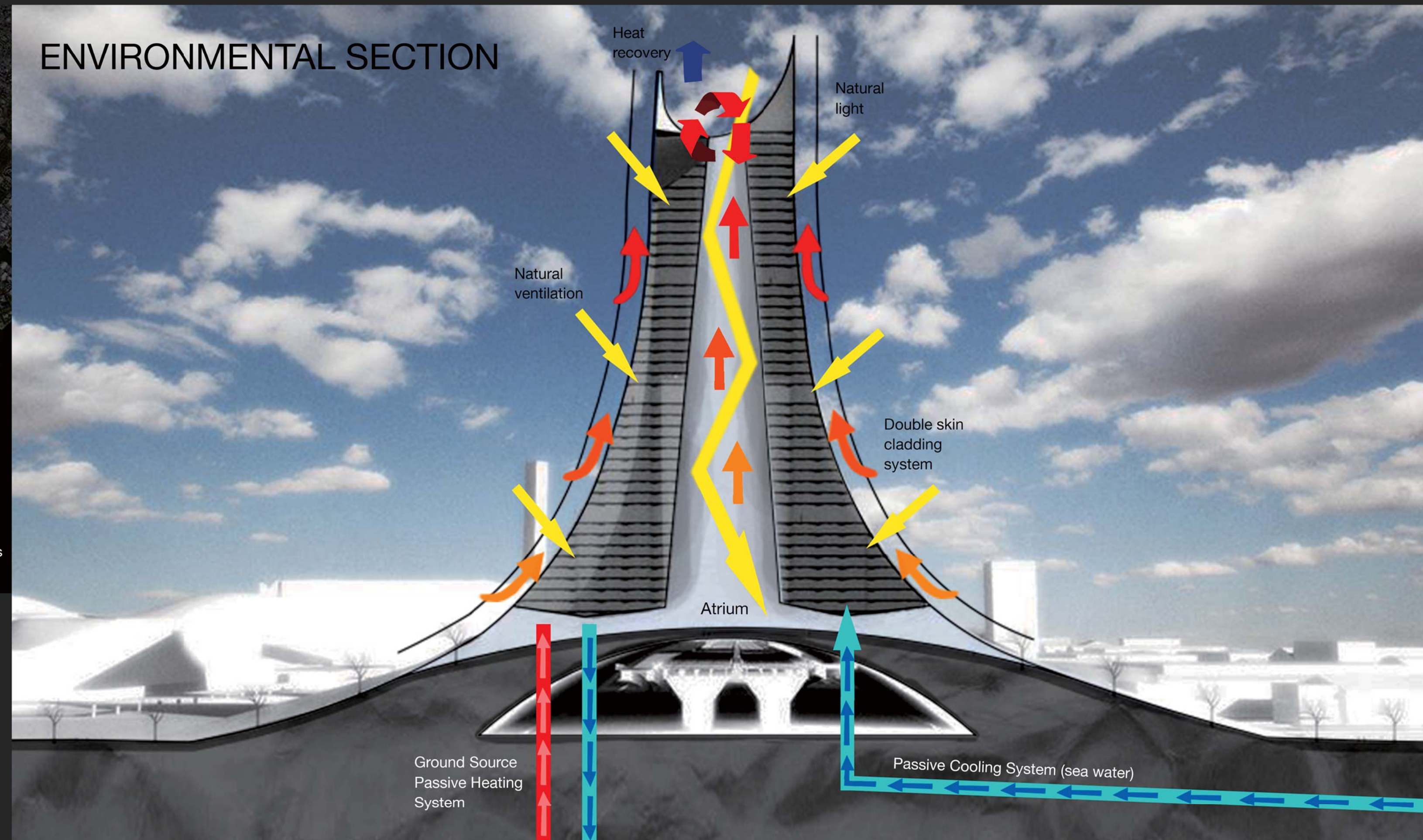


Our proposal focuses on aiding the existing connections for streamlined operation and efficiency, through designing new infrastructure at key transportation nodes. This will allow for simple and safe pedestrian movement around dense and fast paced vehicular routes. Proposing an integrated tram service throughout the Olympic site to provide a quicker alternative to walking that reduces traffic and pollution in the immediate area. Lowering the Menji Dori road that cuts through the Olympic site allows smooth connections between the venues on the new hard landscaped pedestrian routes.

The key transportation node we propose integrates tram and train stations on the lower part, and tower shaped buildings above it to accommodate commercial facilities, office space for Olympic delegations and media coverage offices, and accommodation for athletes and visitors. After the games, the new accommodation space could economically be converted for housing and facilities for residents. The towers will use seawater and ground source heat to cool and heat the buildings which in addition to heat recovery and double cladding systems aim to minimise their environmental impact.

This new infrastructure proposed will aid to deliver the desire 'compact games' concept for the 2020 Tokyo Olympics by efficiently using transport lines and nodes and providing new facilities for the local users, but also will encourage further redevelopment of the city's waterfront in the future.

ENVIRONMENTAL SECTION



PROPOSAL CONCEPT

