

The "Walkatblue" City, Tokyo

"Walkatblue" ? "Walkatblue" has 3 meanings

Concept

"Water blue" city

By introducing a ship transportation, actively utilizing water full of Tokyo. Tokyo was used to be water city in Edo (19th century). But now, there are few water resources. It needs to take water city back.

"Walkable" city

By Urban planning lives to walk., transportation system of low-carbon, Let's go to the water city like blue by walking! Tokyo is one of the biggest city in the world. It is required to reduce energies.

"Walk at blue" city.

By Water and Walk, Appeal the Water City, Tokyo

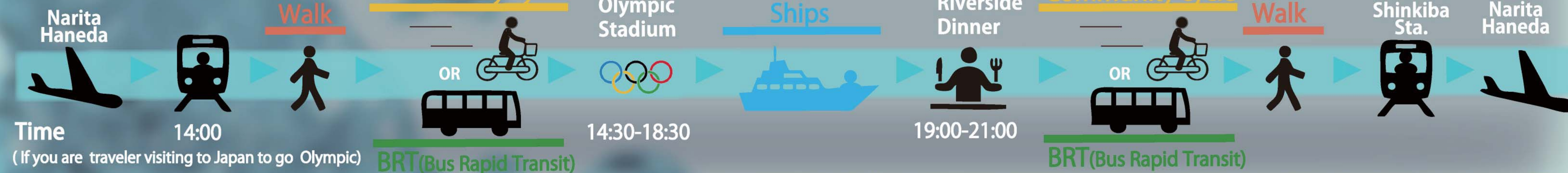
The best way reducing energies is just walking! No more extra cars. We aim to make "Walkatblue" Tokyo able to live only walking.

"Walk at blue" city.

Simulation of transportation during Olympic

If you have a traffic jam during the Olympic, what do you do? We suggest the transportation of walking, community cycle and ships. These transportation use low CO2.

Transportation



"Water blue" city

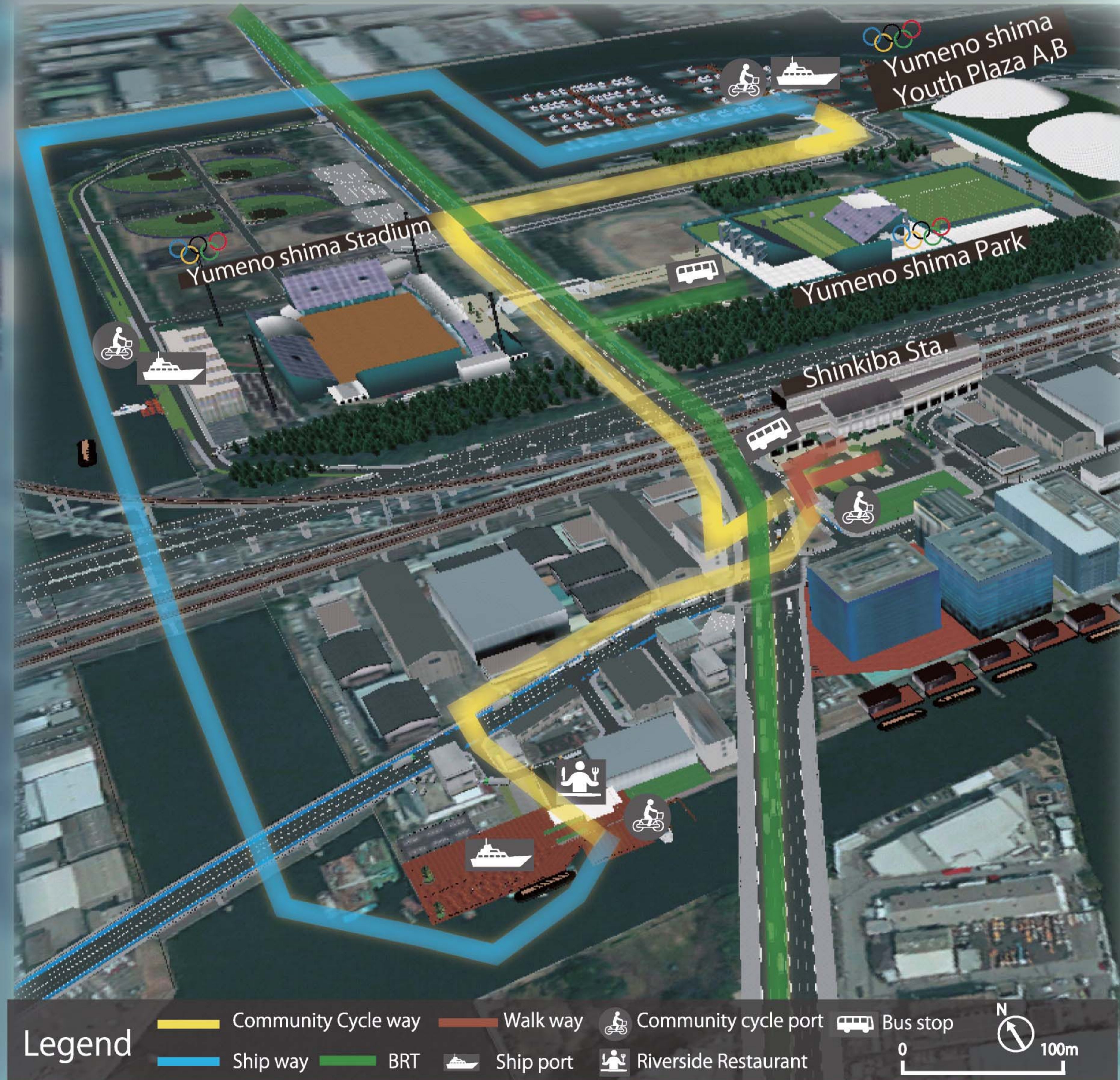
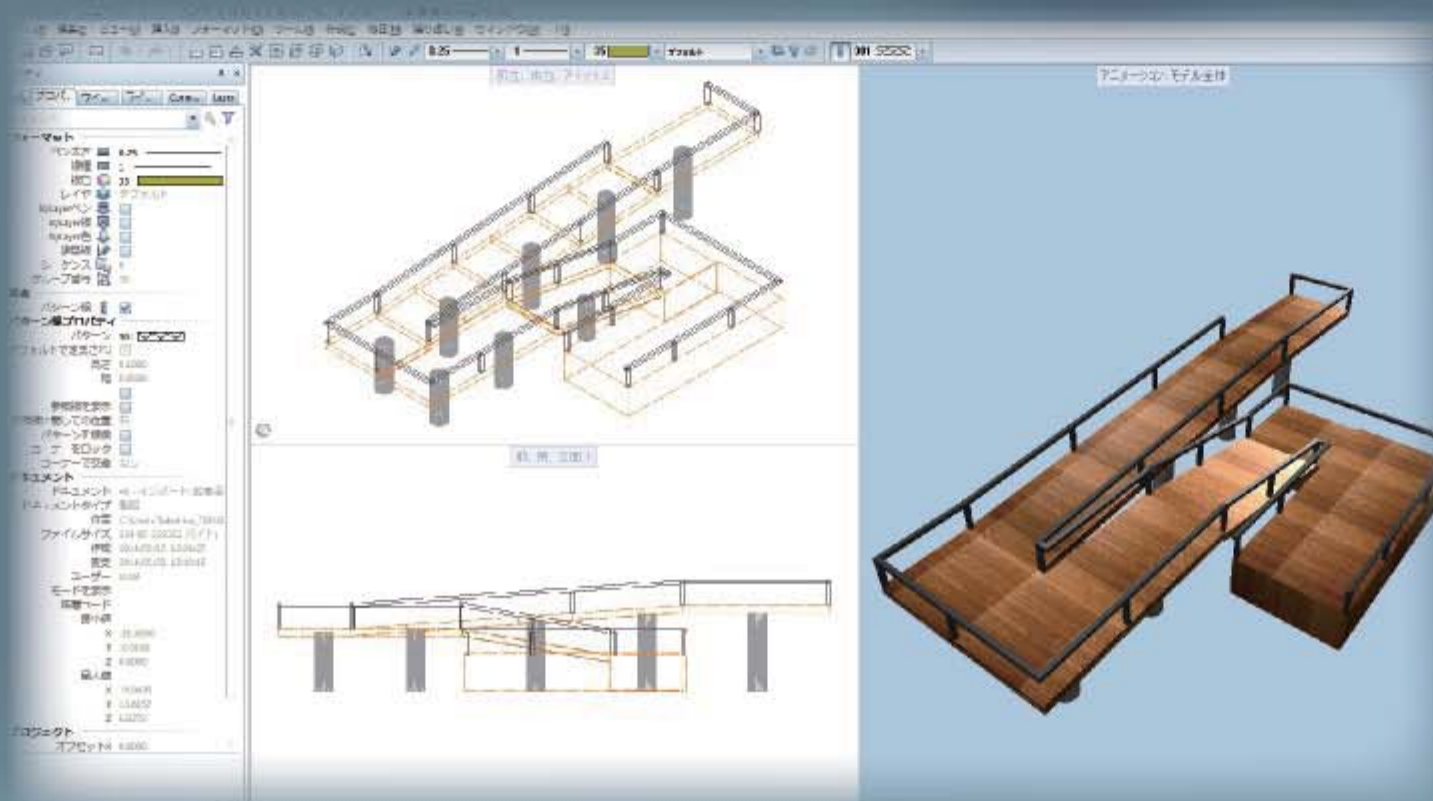
Ships

We made 4 ports for ships in Shinkiba. Shinkiba used to be an important town of forestry. So there are many spaces for ships port. Many boats of public owned moor here. Future, increasing port that public boat be able to moor the entire Tokyo.



Models of Harbor

We made a harbor by All Plan software. A harbor needs to deal with wax pull of the tide. So we designed this harbor referring to the pier.



Legend

Community Cycle way Walk way Community cycle port Bus stop Ship way BRT Ship port Riverside Restaurant

Target area



Shinkiba is near by the Tokyo bay and many rivers. This area is like water city. But now, The area has many problems. One is the dramatically increasing population. In 2020, Tokyo Olympic, number of population in Koto 15% increase compared to 2011. During Tokyo Olympic, it causes big traffic jam in Shinkiba area by Citizen, Business man and many Tourists.



"Walkable" city

BRT(Bus Rapid Transit) × Community Cycle



Community cycle are popular in Europe. It maybe return to the cycle all ports. Foreign travelers also use this with easy register by credit card. Moreover, we created the cycling paths in the roadway. Is is able to move smoothly!

We created BRT(Bus Rapid Transit) and this motor way in the roadway. General buses are often late by traffic jam. But, BRT enable to smooth transportation by running the bus road way.



Effect of New Traffic

By introducing ship and BRT, we decreased traffic jam. Refer to official text in Tokyo Olympic, the capacity in Shinkiba area are 46,000 person. One side, we estimated the capacity of ships and BRT. Both transportation works from 8 AM to 11 PM. The total of capacity are 82,800 person. It found that new traffic system have a bigger transportation capacity than visitors by Olympics.

Source : <https://tokyo2020.jp/jp/plan/venue/>

Facility	Capacity	sports
Yum enoshim a Youth Plaza A	7000	badminton
Yum enoshim a Youth Plaza B	18000	basketball
Yum enoshim a Park	7000	archery
Yum enoshim a Stadium	14000	horse
TOTAL : Facility Capacity 46,000 person		

Introduced Transportation	Capacity	Interval
Ship	200	10 minutes
BRT	60	5 minutes

Type	Volume
Ship capacity (15hours/day 8 AM to 11 PM)	72000
BRT capacity (15hours/day 8 AM to 11 PM)	10800
TOTAL : Ship & BRT Capacity 82,800 person	

