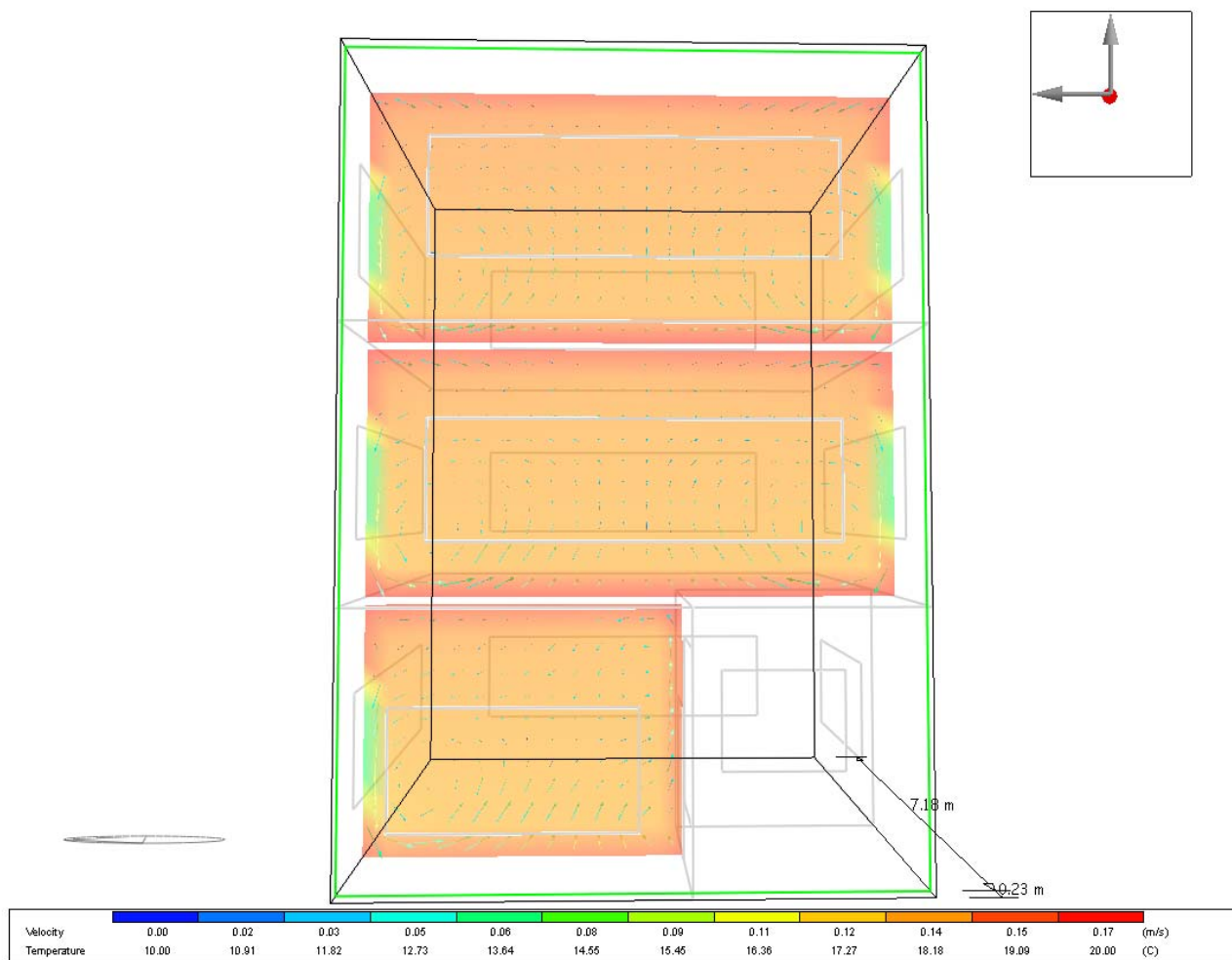
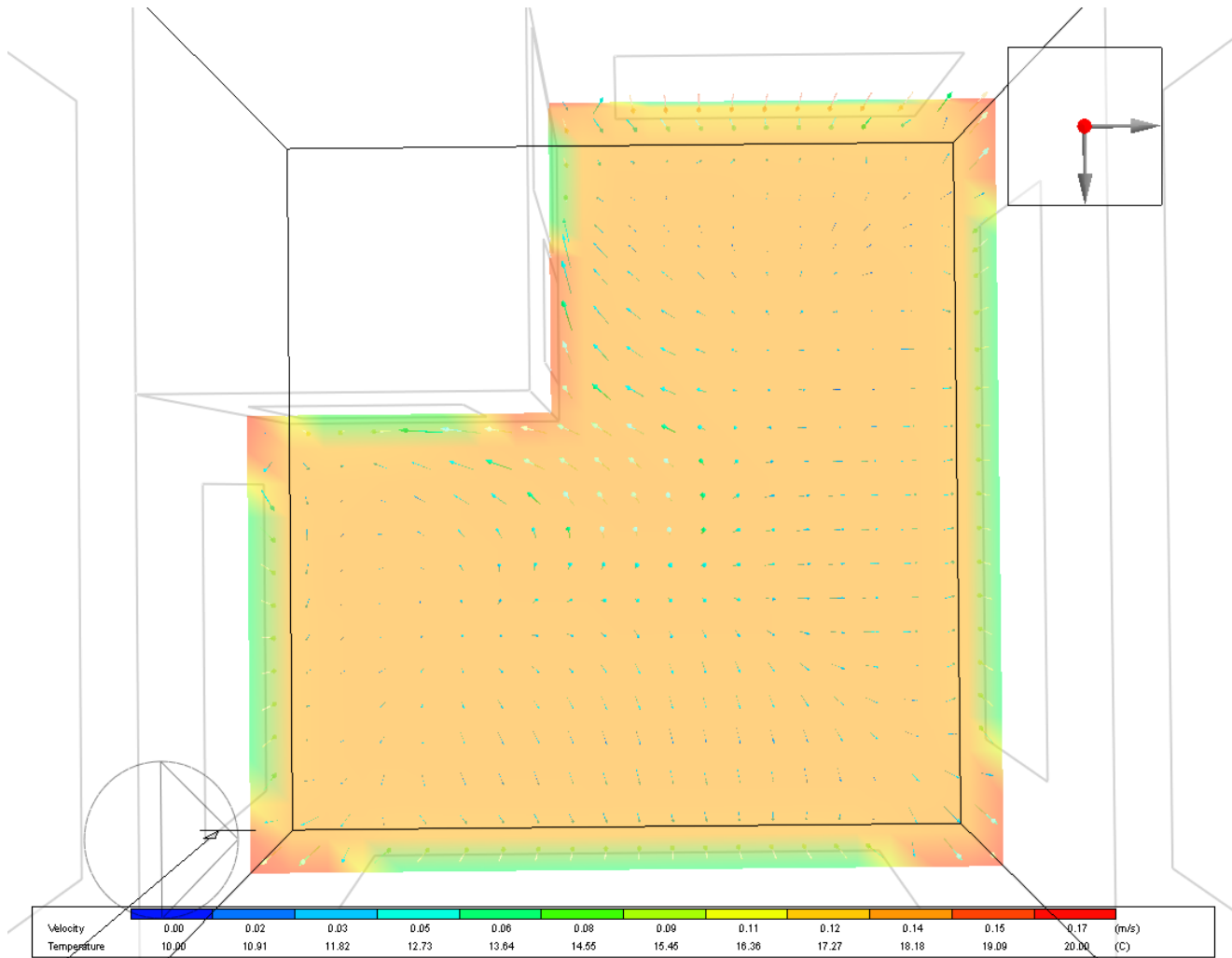


目次	.....	1
1 出力結果	.....	2
1.1 CFD解析画像	.....	2
1.2 ビジュアライゼーション画像	.....	5
1.3 暖房設計	.....	6
1.3.1 熱損失分析結果	.....	6
1.3.2 要約表	.....	7
1.4 冷房設計	.....	8
1.4.1 詳細結果	.....	9
1.4.2 要約表	.....	10
1.5 シミュレーション	.....	10
1.5.1 詳細結果	.....	10
1.5.2 快適解析結果	.....	12
1.5.3 エネルギー消費量	.....	13
1.5.4 CO2排出量	.....	14
1.6 ゾーン別データ	.....	15
2 建物概要	.....	19
3 シミュレーション基本情報	.....	19
4 納品物品	.....	19

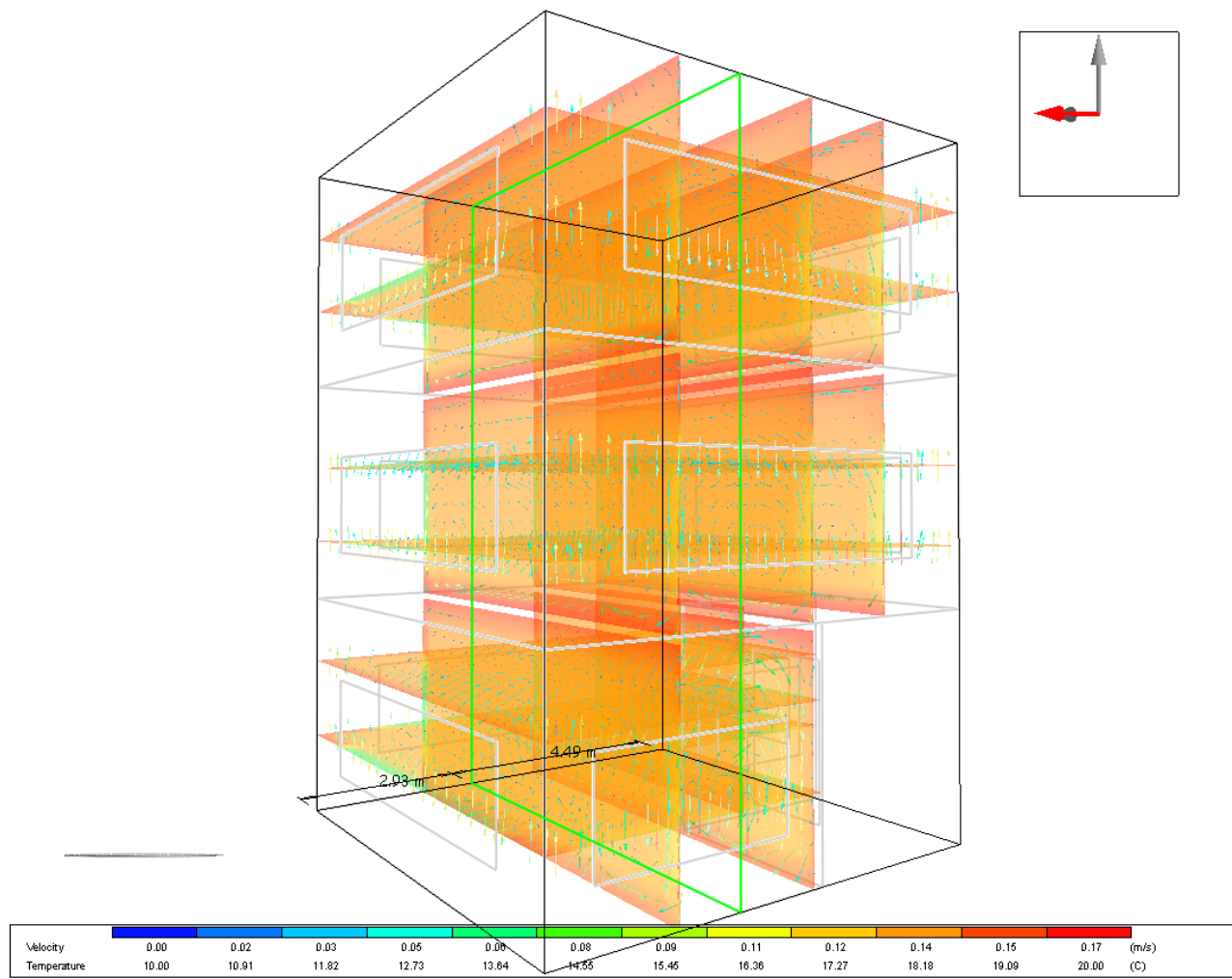
1. 出力結果  
1.1 CFD解析結果



CFD解析画面-リビング断面

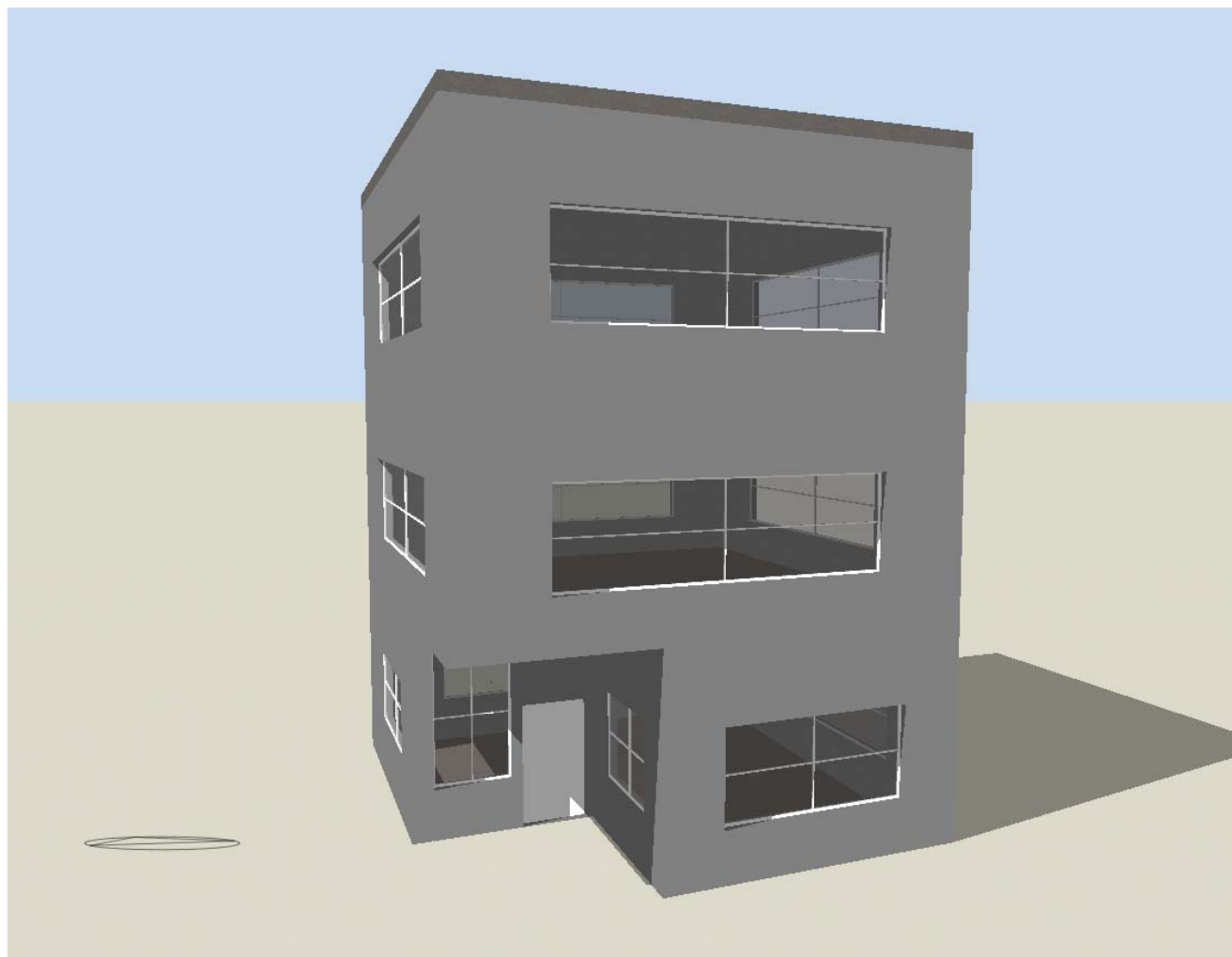


CFD解析画面-1階平面

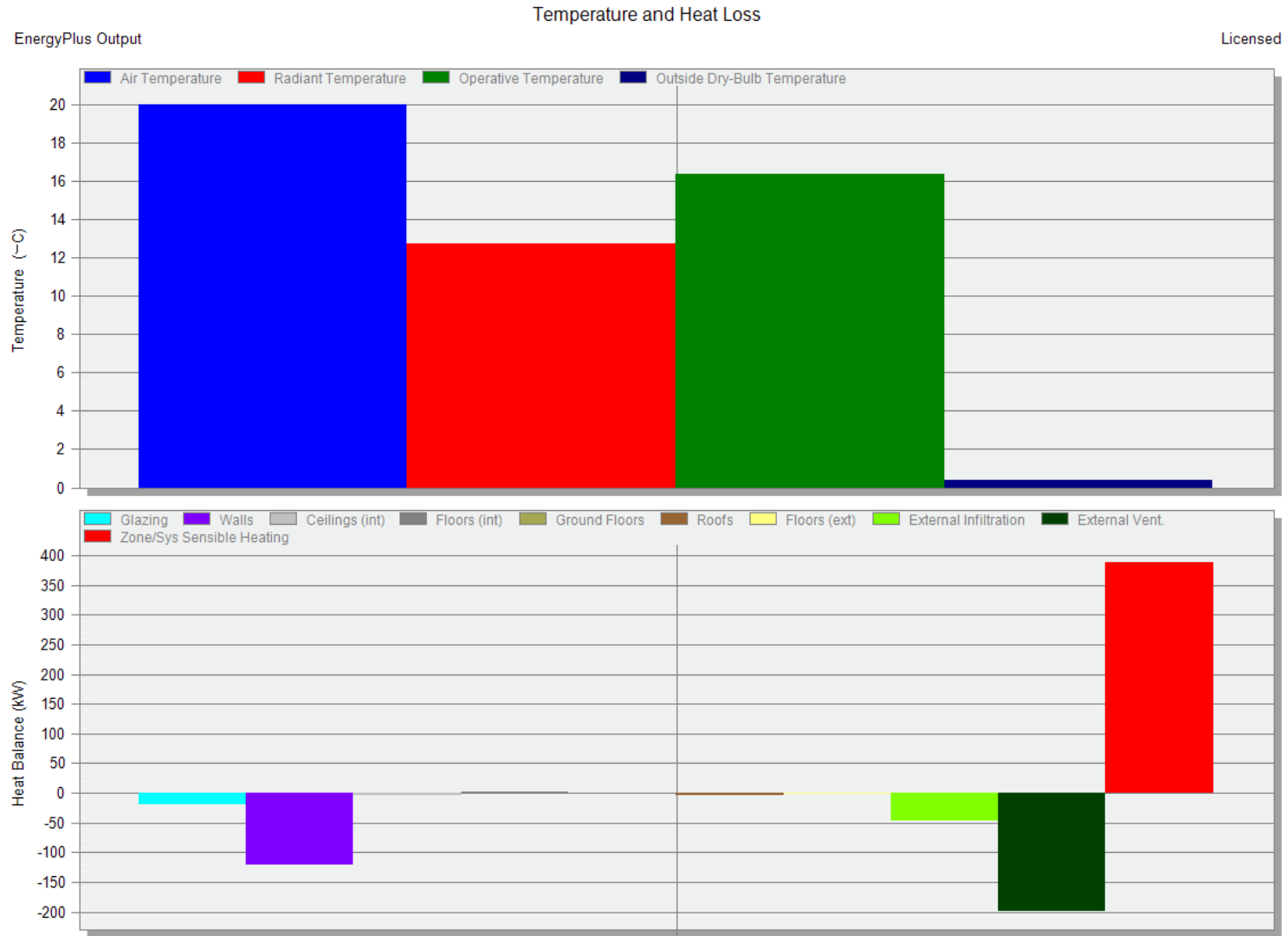


CFD解析画面 概観

## 1.2 ビジュアル化画面



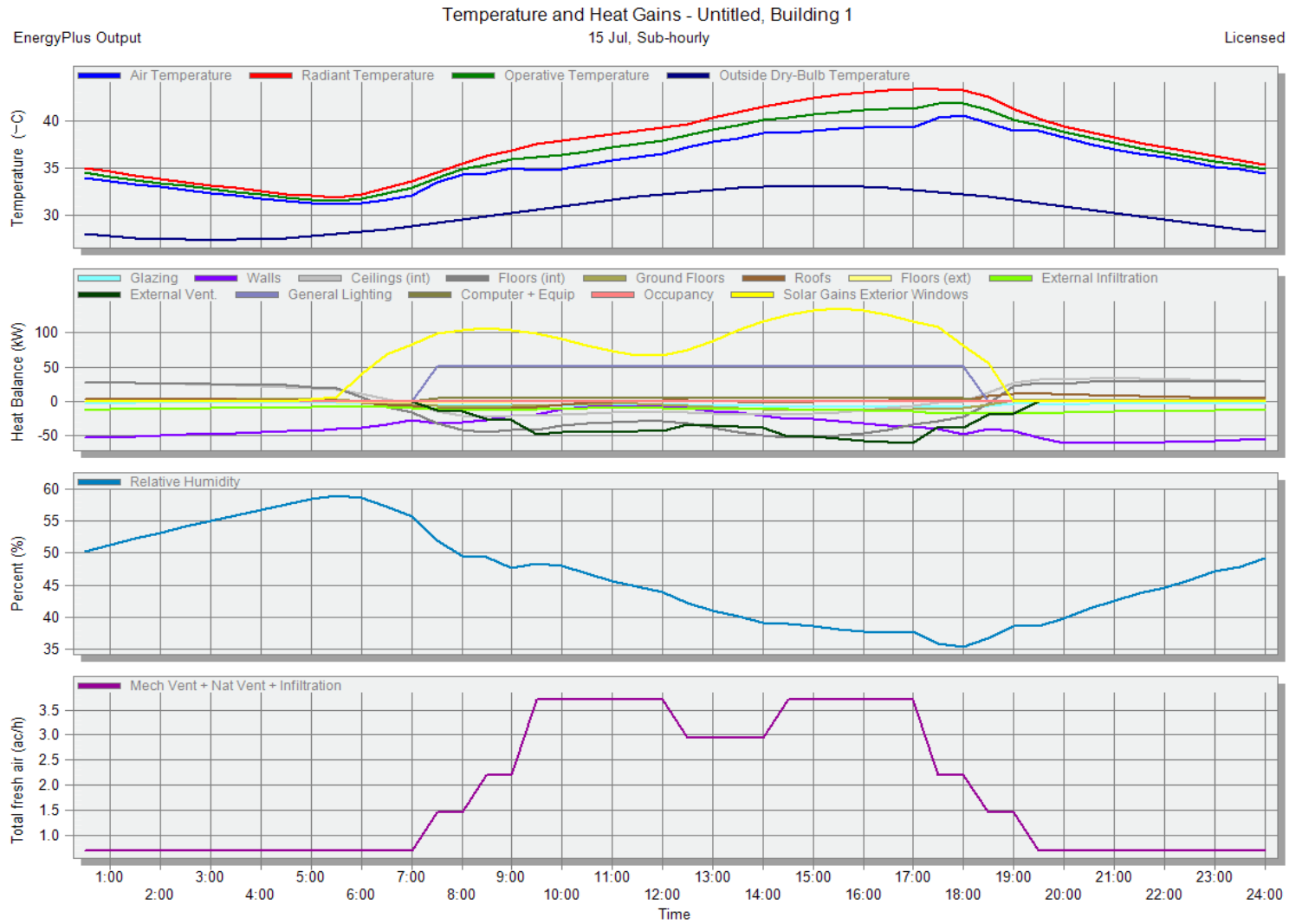
1.3 暖房設計  
1.3.1 熱損失分析結果



### 1.3.2 要約表

Zone	Comfort Temperature (°C)	Steady-State Heat Loss (kW)	Design Capacity(kW)
-  Building 1 Total design heat loss = 699.710 (kW)			
-  Block 1 Total design heat loss = 198.760 (kW)			
Zone 1	16.25	110.42	198.76
-  Block 2 Total design heat loss = 180.000 (kW)			
Zone 1	16.38	100.00	180.00
-  Block 3 Total design heat loss = 133.520 (kW)			
Zone 1	16.45	74.18	133.52
-  Block 4 Total design heat loss = 187.430 (kW)			
Zone 1	16.39	104.13	187.43

1.4 冷房設計  
1.4.1 詳細結果





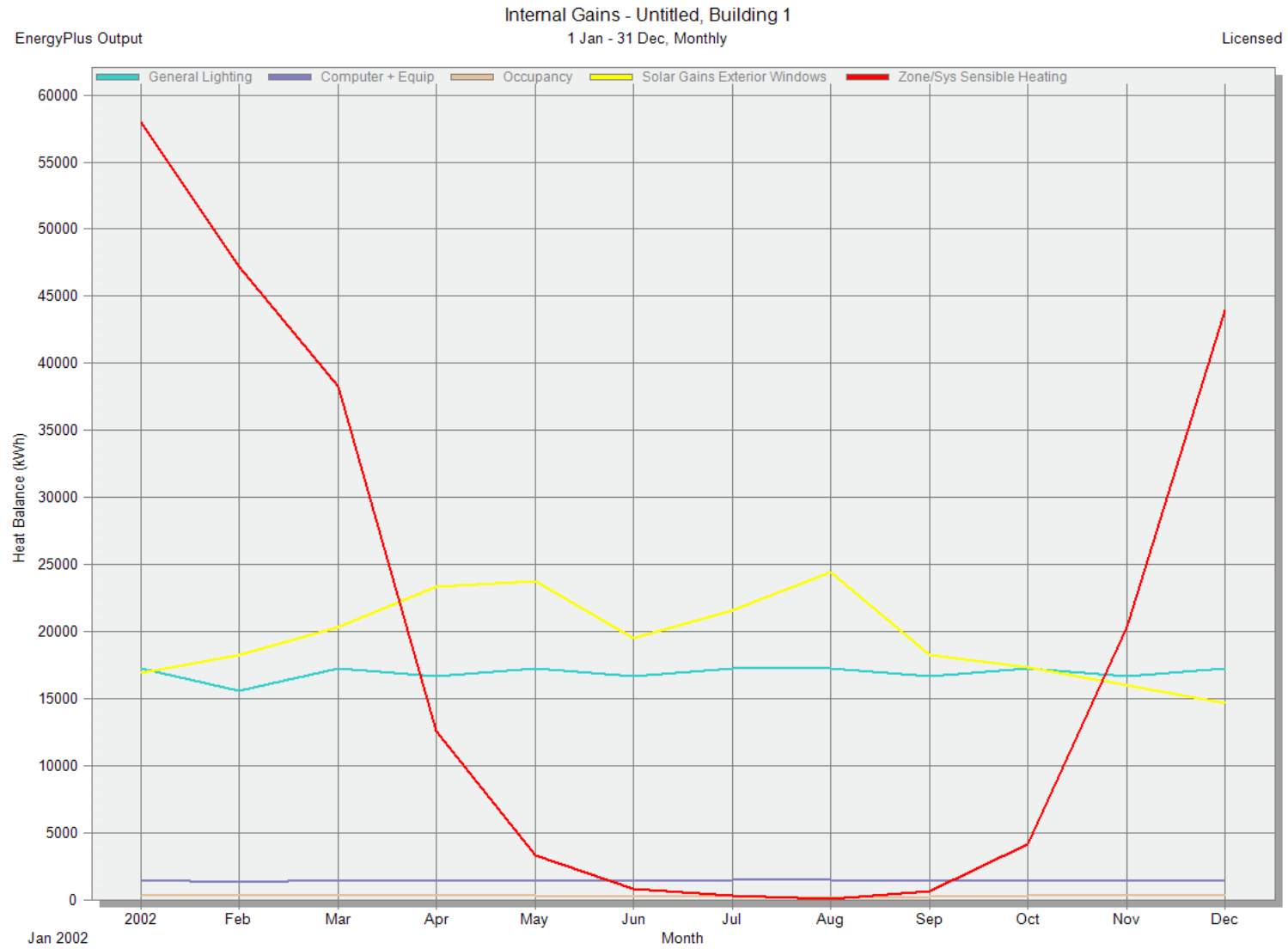
1.4.2 要約表

Building	Block	Zone	Design Capacity (kW)	Design Flow Rate (m <sup>3</sup> /s)	Total Cooling Load (kW)	Sensible (kW)	Latent (kW)	Air Temperature (°C)	Humidity (%)	Time of Max Cooling	Max Op Temp in Day (°C)	Floor Area (m <sup>2</sup> )	Volume (m <sup>3</sup> )	Flow/Floor Area (l/s-m <sup>2</sup> )
Building 1	Block 1	Zone 1	0	0	0	0	0	-	-	-	31.9	478.7	2872.4	0
Building 1	Block 2	Zone 1	0	0	0	0	0	-	-	-	39.2	545.6	2455	0
Building 1	Block 3	Zone 1	0	0	0	0	0	-	-	-	41.3	396.9	1627.3	0
Building 1	Block 4	Zone 1	0	0	0	0	0	-	-	-	43.4	598.6	2454.4	0

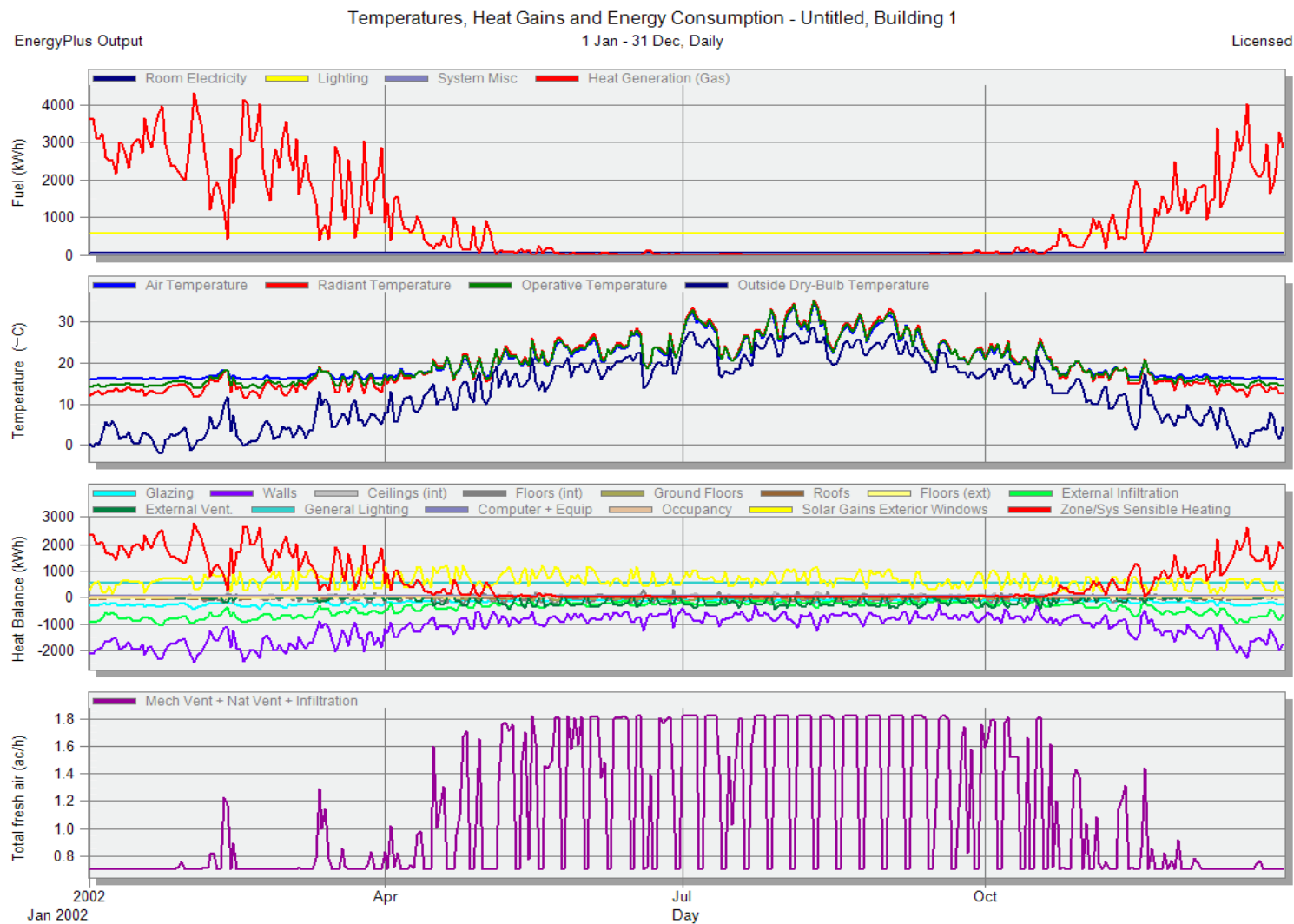
## 1.5 シミュレーション

### 1.5.1 詳細結果

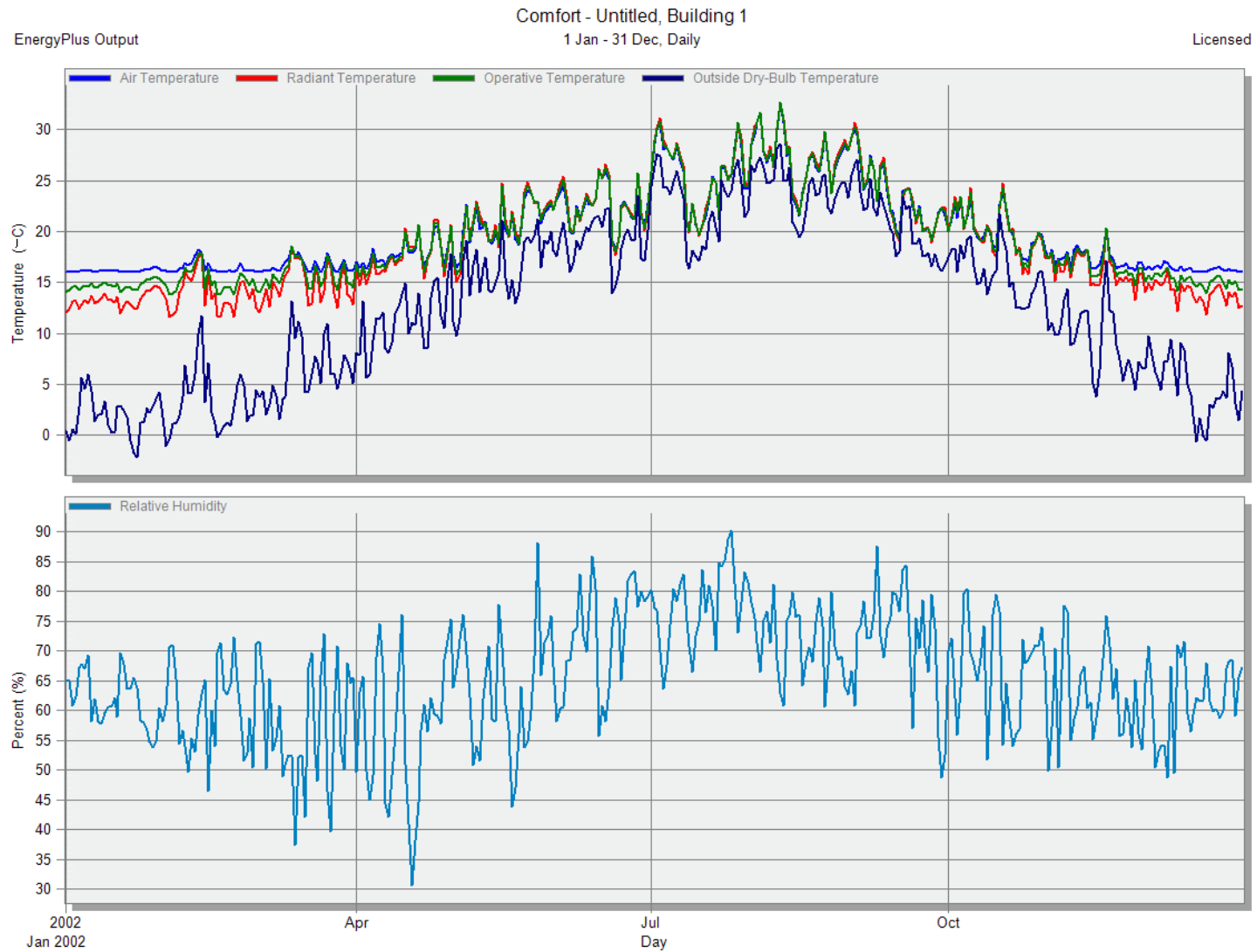
(1) 建物素材と換気口を通じた熱吸収/損失、内部熱吸収、気温と外気乾球気温（年間推移）



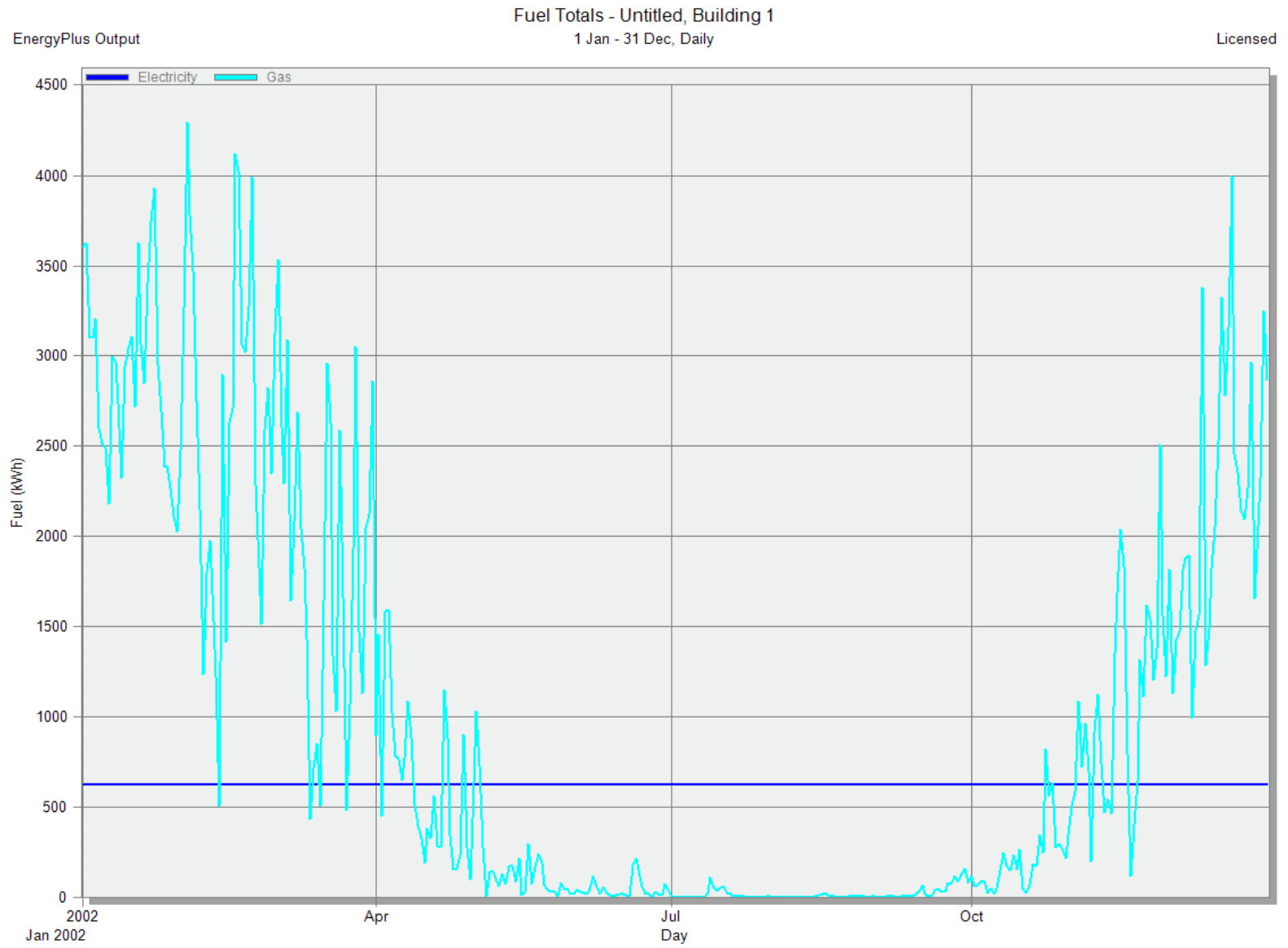
(2) 建物素材と換気口を通じた熱吸収/損失、内部熱吸収、気温と外気乾球気温(年間推移)



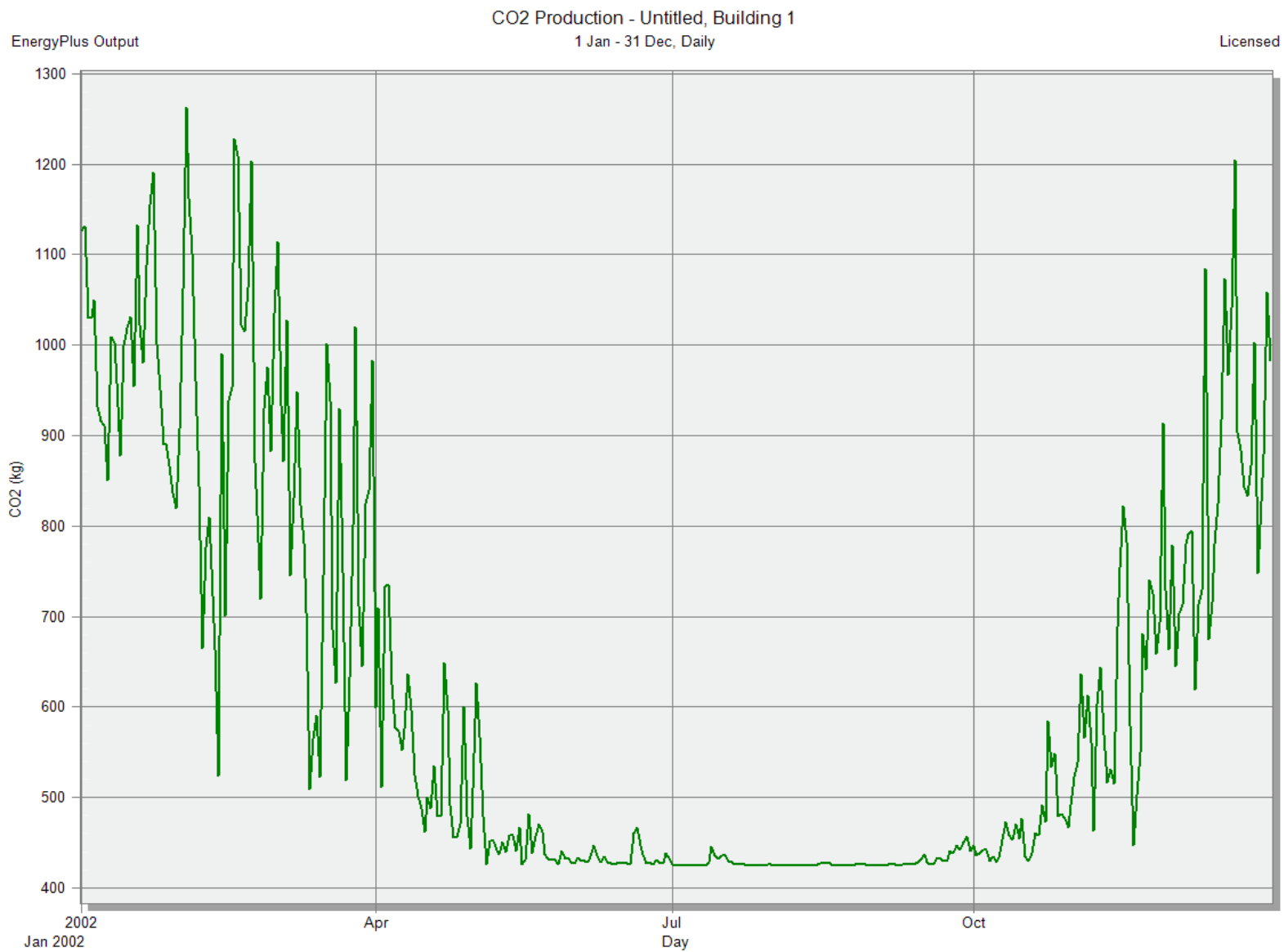
### 1.5.2 快適解析結果



### 1.5.3 エネルギー消費量



### 1.5.4 CO2排出量



1.6 ゾーン別データ

ゾーン		Block 1 - Zone 1									
フロア面積 (m2)		478.729									
体積 (m3)		2872.375									
暖房計算	○										
暖房設定温度 (C)		20									
冷房計算	×										
冷房設定温度 (C)		99									
最大作用温度 (C)		0									
要素	隣接条件	面積 (m2)	フローパス	U値 (W/K-m2)	U値*面積 (W/K)	SROut (m2-K/W)	SRIn (m2-K/W)	方向 (deg E of N)	傾き (deg)	重素材	
隙間風	Outside	N/A	N/A	N/A	724.81	N/A	N/A	N/A	N/A	×	
地上階	Ground	478.729	Project internal floor	3.553	1701.0682	0.01	0.17	0	180	○	
天井	Block 2 - Zone 1	473.116	Project internal floor_Reversed	4.73	2237.7127	0.04	0.1	0	0	○	
壁	Outside	0.043	Uninsulated Semi-exposed wall Lightweight	2.547	0.1085	0.04	0.13	81.66	90	○	
壁	Outside	85.499	Uninsulated Semi-exposed wall Lightweight	2.547	217.7261	0.04	0.13	350.7	90	○	
壁	Outside	57.736	Uninsulated Semi-exposed wall Lightweight	2.547	147.0275	0.04	0.13	355.93	90	○	
壁	Outside	33.98	Uninsulated Semi-exposed wall Lightweight	2.547	86.5314	0.04	0.13	87.69	90	○	
壁	Outside	42.416	Uninsulated Semi-exposed wall Lightweight	2.547	108.0148	0.04	0.13	359.32	90	○	
壁	Outside	34.234	Uninsulated Semi-exposed wall Lightweight	2.547	87.1788	0.04	0.13	270	90	○	
壁	Outside	76.804	Uninsulated Semi-exposed wall Lightweight	2.547	195.5855	0.04	0.13	2.92	90	○	
壁	Outside	36.641	Uninsulated Semi-exposed wall Lightweight	2.547	93.3068	0.04	0.13	7.02	90	○	
壁	Outside	44.05	Uninsulated Semi-exposed wall Lightweight	2.547	112.1748	0.04	0.13	9.39	90	○	
壁	Outside	32.434	Uninsulated Semi-exposed wall Lightweight	2.547	82.5952	0.04	0.13	9.37	90	○	
壁	Outside	0.049	Uninsulated Semi-exposed wall Lightweight	2.547	0.1243	0.04	0.13	283.03	90	○	
壁	Outside	34.449	Uninsulated Semi-exposed wall Lightweight	2.547	87.7258	0.04	0.13	196.8	90	○	
壁	Outside	39.762	Uninsulated Semi-exposed wall Lightweight	2.547	101.256	0.04	0.13	193.14	90	○	
壁	Outside	43.764	Uninsulated Semi-exposed wall Lightweight	2.547	111.4465	0.04	0.13	189.73	90	○	
壁	Outside	23.841	Uninsulated Semi-exposed wall Lightweight	2.547	60.7121	0.04	0.13	183.95	90	○	
壁	Outside	60.501	Uninsulated Semi-exposed wall Lightweight	2.547	154.0682	0.04	0.13	181.95	90	○	
壁	Outside	44.418	Uninsulated Semi-exposed wall Lightweight	2.547	113.1112	0.04	0.13	176.29	90	○	
壁	Outside	60.533	Uninsulated Semi-exposed wall Lightweight	2.547	154.1492	0.04	0.13	169.83	90	○	
壁	Outside	86.852	Uninsulated Semi-exposed wall Lightweight	2.547	221.1731	0.04	0.13	164.6	90	○	

ゾーン Block 2 - Zone 1

フロア面積 (m2) 545.559  
 体積 (m3) 2455.015  
 暖房計算 ○  
 暖房設定温度 (C) 20  
 冷房計算 ×  
 冷房設定温度 (C) 99  
 最大作用温度 (C) 0

要素	隣接条件	面積 (m2)	フロー/バス	U値 (W/K-m2)	U値*面積 (W/K)	SROut (m2-K/W)	SRIn (m2-K/W)	方向 (deg E of N)	傾き (deg)	重素材
隙間風	Outside	N/A	N/A	N/A	619.494	N/A	N/A	N/A	N/A	×
床	Block 1 - Zone 1	473.116	Project internal floor	3.553	1681.1242	0.04	0.17	N/A	0	○
床	Outside	73.217	Project external floor	0.25	18.3239	0.04	0.17	N/A	0	180 ○
天井	Block 3 - Zone 1	401.714	Project internal floor_Reversed	4.73	1899.9982	0.04	0.1	N/A	0	○
Roof	Outside	72.744	Project flat roof	0.249	18.1349	0.04	0.1	N/A	180	○
壁	Outside	0.037	Uninsulated Semi-exposed wall Lightweight	2.547	0.0932	0.04	0.13	N/A	81.66	90 ○
壁	Outside	64.124	Uninsulated Semi-exposed wall Lightweight	2.547	163.2946	0.04	0.13	N/A	350.7	90 ○
壁	Outside	43.302	Uninsulated Semi-exposed wall Lightweight	2.547	110.2708	0.04	0.13	N/A	355.93	90 ○
壁	Outside	25.485	Uninsulated Semi-exposed wall Lightweight	2.547	64.8986	0.04	0.13	N/A	87.69	90 ○
壁	Outside	31.812	Uninsulated Semi-exposed wall Lightweight	2.547	81.011	0.04	0.13	N/A	359.32	90 ○
壁	Outside	25.676	Uninsulated Semi-exposed wall Lightweight	2.547	65.3842	0.04	0.13	N/A	270	90 ○
壁	Outside	57.603	Uninsulated Semi-exposed wall Lightweight	2.547	146.6891	0.04	0.13	N/A	2.92	90 ○
壁	Outside	27.48	Uninsulated Semi-exposed wall Lightweight	2.547	69.9797	0.04	0.13	N/A	7.02	90 ○
壁	Outside	57.363	Uninsulated Semi-exposed wall Lightweight	2.547	146.0779	0.04	0.13	N/A	9.38	90 ○
壁	Outside	0.043	Uninsulated Semi-exposed wall Lightweight	2.547	0.109	0.04	0.13	N/A	283.03	90 ○
壁	Outside	25.837	Uninsulated Semi-exposed wall Lightweight	2.547	65.7942	0.04	0.13	N/A	196.8	90 ○
壁	Outside	31.128	Uninsulated Semi-exposed wall Lightweight	2.547	79.2697	0.04	0.13	N/A	193.14	90 ○
壁	Outside	88.449	Uninsulated Semi-exposed wall Lightweight	2.547	225.2379	0.04	0.13	N/A	280.88	90 ○
壁	Outside	0.034	Uninsulated Semi-exposed wall Lightweight	2.547	0.0873	0.04	0.13	N/A	190.89	90 ○
壁	Outside	88.262	Uninsulated Semi-exposed wall Lightweight	2.547	224.7625	0.04	0.13	N/A	98.64	90 ○
壁	Outside	16.571	Uninsulated Semi-exposed wall Lightweight	2.547	42.1992	0.04	0.13	N/A	187.54	90 ○
壁	Outside	17.906	Uninsulated Semi-exposed wall Lightweight	2.547	45.5981	0.04	0.13	N/A	183.95	90 ○
壁	Outside	45.376	Uninsulated Semi-exposed wall Lightweight	2.547	115.551	0.04	0.13	N/A	181.95	90 ○
壁	Outside	33.313	Uninsulated Semi-exposed wall Lightweight	2.547	84.8334	0.04	0.13	N/A	176.29	90 ○
壁	Outside	45.4	Uninsulated Semi-exposed wall Lightweight	2.547	115.6119	0.04	0.13	N/A	169.83	90 ○
壁	Outside	65.139	Uninsulated Semi-exposed wall Lightweight	2.547	165.8798	0.04	0.13	N/A	164.6	90 ○
壁	Outside	2.937	Uninsulated Semi-exposed wall Lightweight	2.547	7.4794	0.04	0.13	N/A	135.97	90 ○
壁	Outside	2.412	Uninsulated Semi-exposed wall Lightweight	2.547	6.1412	0.04	0.13	N/A	88.49	90 ○
壁	Outside	2.916	Uninsulated Semi-exposed wall Lightweight	2.547	7.4257	0.04	0.13	N/A	38.45	90 ○
壁	Outside	2.983	Uninsulated Semi-exposed wall Lightweight	2.547	7.5958	0.04	0.13	N/A	329.04	90 ○
壁	Outside	3.048	Uninsulated Semi-exposed wall Lightweight	2.547	7.7619	0.04	0.13	N/A	268.83	90 ○
壁	Outside	3.205	Uninsulated Semi-exposed wall Lightweight	2.547	8.1622	0.04	0.13	N/A	211.61	90 ○



ゾーン Block 3 - Zone 1

フロア面積 (m2) 396.912  
 体積 (m3) 1627.341  
 暖房計算 ○  
 暖房設定温度 (C) 20  
 冷房計算 ×  
 冷房設定温度 (C) 99  
 最大作用温度 (C) 0

要素	隣接条件	面積 (m2)	フロー/バス	U値 (W/K-m2)	U値*面積 (W/K)	SROut (m2-K/W)	SRIn (m2-K/W)	方向 (deg E of N)	傾き (deg)	重素材
隙間風	Outside	N/A	N/A	N/A	410.641	N/A	N/A	N/A	N/A	×
床	Block 2 - Zone 1	401.714	Project internal floor	3.553	1427.4098	0.04	0.17	0	0	○
天井	Block 4 - Zone 1	401.708	Project internal floor_Reversed	4.73	1899.9707	0.04	0.1	0	0	○
壁	Outside	0.035	Uninsulated Semi-exposed wall Lightweight	2.547	0.0891	0.04	0.13	81.66	90	○
壁	Outside	58.424	Uninsulated Semi-exposed wall Lightweight	2.547	148.7796	0.04	0.13	350.7	90	○
壁	Outside	39.453	Uninsulated Semi-exposed wall Lightweight	2.547	100.4689	0.04	0.13	355.93	90	○
壁	Outside	23.22	Uninsulated Semi-exposed wall Lightweight	2.547	59.1299	0.04	0.13	87.69	90	○
壁	Outside	28.985	Uninsulated Semi-exposed wall Lightweight	2.547	73.8102	0.04	0.13	359.32	90	○
壁	Outside	23.393	Uninsulated Semi-exposed wall Lightweight	2.547	59.5722	0.04	0.13	270	90	○
壁	Outside	52.483	Uninsulated Semi-exposed wall Lightweight	2.547	133.6501	0.04	0.13	2.92	90	○
壁	Outside	25.038	Uninsulated Semi-exposed wall Lightweight	2.547	63.7593	0.04	0.13	7.02	90	○
壁	Outside	52.264	Uninsulated Semi-exposed wall Lightweight	2.547	133.0934	0.04	0.13	9.38	90	○
壁	Outside	0.041	Uninsulated Semi-exposed wall Lightweight	2.547	0.1049	0.04	0.13	283.03	90	○
壁	Outside	23.54	Uninsulated Semi-exposed wall Lightweight	2.547	59.9458	0.04	0.13	196.8	90	○
壁	Outside	27.191	Uninsulated Semi-exposed wall Lightweight	2.547	69.2422	0.04	0.13	193.14	90	○
壁	Outside	16.005	Uninsulated Semi-exposed wall Lightweight	2.547	40.7564	0.04	0.13	191.63	90	○
壁	Outside	13.877	Uninsulated Semi-exposed wall Lightweight	2.547	35.3381	0.04	0.13	187.54	90	○
壁	Outside	16.314	Uninsulated Semi-exposed wall Lightweight	2.547	41.545	0.04	0.13	183.95	90	○
壁	Outside	41.342	Uninsulated Semi-exposed wall Lightweight	2.547	105.2798	0.04	0.13	181.95	90	○
壁	Outside	30.352	Uninsulated Semi-exposed wall Lightweight	2.547	77.2928	0.04	0.13	176.29	90	○
壁	Outside	41.364	Uninsulated Semi-exposed wall Lightweight	2.547	105.3353	0.04	0.13	169.83	90	○
壁	Outside	59.349	Uninsulated Semi-exposed wall Lightweight	2.547	151.1349	0.04	0.13	164.66	90	○
壁	Outside	4.276	Uninsulated Semi-exposed wall Lightweight	2.547	10.8893	0.04	0.13	164.56	90	○
壁	Outside	3.743	Uninsulated Semi-exposed wall Lightweight	2.547	9.5309	0.04	0.13	133.64	90	○
壁	Outside	3.784	Uninsulated Semi-exposed wall Lightweight	2.547	9.6353	0.04	0.13	39.81	90	○
壁	Outside	3.946	Uninsulated Semi-exposed wall Lightweight	2.547	10.0489	0.04	0.13	15	90	○
壁	Outside	4.843	Uninsulated Semi-exposed wall Lightweight	2.547	12.3316	0.04	0.13	5.8	90	○
壁	Outside	5.29	Uninsulated Semi-exposed wall Lightweight	2.547	13.472	0.04	0.13	351.01	90	○
壁	Outside	3.838	Uninsulated Semi-exposed wall Lightweight	2.547	9.7744	0.04	0.13	340.07	90	○
壁	Outside	4.53	Uninsulated Semi-exposed wall Lightweight	2.547	11.5346	0.04	0.13	315	90	○
壁	Outside	4.277	Uninsulated Semi-exposed wall Lightweight	2.547	10.8913	0.04	0.13	213.02	90	○
壁	Outside	4.346	Uninsulated Semi-exposed wall Lightweight	2.547	11.0675	0.04	0.13	190.81	90	○
壁	Outside	4.036	Uninsulated Semi-exposed wall Lightweight	2.547	10.2773	0.04	0.13	180	90	○
壁	Outside	4.638	Uninsulated Semi-exposed wall Lightweight	2.547	11.8101	0.04	0.13	171.29	90	○

ゾーン Block 4 - Zone 1

フロア面積 (m2) 598.635  
 体積 (m3) 2454.405  
 暖房計算 ○  
 暖房設定温度 (C) 20  
 冷房計算 ×  
 冷房設定温度 (C) 99  
 最大作用温度 (C) 0

要素	隣接条件	面積 (m2)	フローパース	U値 (W/K-m2)	U値*面積 (W/K)	SROut (m2-K/W)	SRIn (m2-K/W)	方向 (deg E of N)	傾き (deg)	重素材
隙間風	Outside	N/A	N/A	N/A	619.34	N/A	N/A	N/A	N/A	×
床	Block 3 - Zone 1	401.708	Project internal floor	3.553	1427.3892	0.04	0.17	0	0	○
床	Outside	134.867	Project external floor	0.25	33.7528	0.04	0.17	0	180	○
Roof	Outside	604.205	Project flat roof	0.249	150.6263	0.04	0.1	180	0	○
壁	Outside	0.035	Uninsulated Semi-exposed wall Lightweight	2.547	0.0891	0.04	0.13	81.66	90	○
壁	Outside	58.424	Uninsulated Semi-exposed wall Lightweight	2.547	148.7796	0.04	0.13	350.7	90	○
壁	Outside	39.453	Uninsulated Semi-exposed wall Lightweight	2.547	100.4689	0.04	0.13	355.93	90	○
壁	Outside	23.22	Uninsulated Semi-exposed wall Lightweight	2.547	59.1299	0.04	0.13	87.69	90	○
壁	Outside	28.985	Uninsulated Semi-exposed wall Lightweight	2.547	73.8102	0.04	0.13	359.32	90	○
壁	Outside	23.393	Uninsulated Semi-exposed wall Lightweight	2.547	59.5722	0.04	0.13	270	90	○
壁	Outside	53.861	Uninsulated Semi-exposed wall Lightweight	2.547	137.1595	0.04	0.13	2.92	90	○
壁	Outside	5.185	Uninsulated Semi-exposed wall Lightweight	2.547	13.2046	0.04	0.13	102.5	90	○
壁	Outside	14.083	Uninsulated Semi-exposed wall Lightweight	2.547	35.8629	0.04	0.13	7.85	90	○
壁	Outside	46.451	Uninsulated Semi-exposed wall Lightweight	2.547	118.2904	0.04	0.13	98.97	90	○
壁	Outside	0.026	Uninsulated Semi-exposed wall Lightweight	2.547	0.0657	0.04	0.13	4.57	90	○
壁	Outside	51.335	Uninsulated Semi-exposed wall Lightweight	2.547	130.7274	0.04	0.13	277.87	90	○
壁	Outside	53.473	Uninsulated Semi-exposed wall Lightweight	2.547	136.1711	0.04	0.13	9.38	90	○
壁	Outside	0.041	Uninsulated Semi-exposed wall Lightweight	2.547	0.1049	0.04	0.13	283.03	90	○
壁	Outside	23.54	Uninsulated Semi-exposed wall Lightweight	2.547	59.9458	0.04	0.13	196.8	90	○
壁	Outside	28.369	Uninsulated Semi-exposed wall Lightweight	2.547	72.2428	0.04	0.13	193.14	90	○
壁	Outside	80.436	Uninsulated Semi-exposed wall Lightweight	2.547	204.8337	0.04	0.13	281.25	90	○
壁	Outside	0.033	Uninsulated Semi-exposed wall Lightweight	2.547	0.0845	0.04	0.13	190.62	90	○
壁	Outside	40.601	Uninsulated Semi-exposed wall Lightweight	2.547	103.3911	0.04	0.13	98.41	90	○
壁	Outside	11.766	Uninsulated Semi-exposed wall Lightweight	2.547	29.9626	0.04	0.13	145.95	90	○
壁	Outside	6.312	Uninsulated Semi-exposed wall Lightweight	2.547	16.0748	0.04	0.13	185.91	90	○
壁	Outside	31.508	Uninsulated Semi-exposed wall Lightweight	2.547	80.2369	0.04	0.13	97.14	90	○
壁	Outside	17.488	Uninsulated Semi-exposed wall Lightweight	2.547	44.5344	0.04	0.13	183.95	90	○
壁	Outside	41.342	Uninsulated Semi-exposed wall Lightweight	2.547	105.2798	0.04	0.13	181.95	90	○
壁	Outside	30.352	Uninsulated Semi-exposed wall Lightweight	2.547	77.2928	0.04	0.13	176.29	90	○
壁	Outside	41.364	Uninsulated Semi-exposed wall Lightweight	2.547	105.3353	0.04	0.13	169.83	90	○
壁	Outside	59.349	Uninsulated Semi-exposed wall Lightweight	2.547	151.1349	0.04	0.13	164.6	90	○
壁	Outside	1.841	Uninsulated Semi-exposed wall Lightweight	2.547	4.6892	0.04	0.13	153.05	90	○
壁	Outside	2.028	Uninsulated Semi-exposed wall Lightweight	2.547	5.1651	0.04	0.13	117.87	90	○
壁	Outside	1.847	Uninsulated Semi-exposed wall Lightweight	2.547	4.703	0.04	0.13	92.89	90	○
壁	Outside	2.047	Uninsulated Semi-exposed wall Lightweight	2.547	5.2115	0.04	0.13	74.97	90	○
壁	Outside	1.873	Uninsulated Semi-exposed wall Lightweight	2.547	4.7687	0.04	0.13	47.91	90	○
壁	Outside	1.355	Uninsulated Semi-exposed wall Lightweight	2.547	3.4493	0.04	0.13	10.3	90	○
壁	Outside	1.591	Uninsulated Semi-exposed wall Lightweight	2.547	4.0503	0.04	0.13	341.26	90	○
壁	Outside	1.556	Uninsulated Semi-exposed wall Lightweight	2.547	3.9632	0.04	0.13	300.65	90	○
壁	Outside	2.054	Uninsulated Semi-exposed wall Lightweight	2.547	5.2303	0.04	0.13	279.3	90	○
壁	Outside	2.137	Uninsulated Semi-exposed wall Lightweight	2.547	5.443	0.04	0.13	262.28	90	○
壁	Outside	1.727	Uninsulated Semi-exposed wall Lightweight	2.547	4.3976	0.04	0.13	235.26	90	○
壁	Outside	1.911	Uninsulated Semi-exposed wall Lightweight	2.547	4.8664	0.04	0.13	200.46	90	○

## 2 建物概要

建物種別	専用住宅
建築面積	155.9m <sup>2</sup>
延床面積	155.9m <sup>2</sup>
構造規模	RC造、地上3階建
所在地	東京、日本

## 3 シミュレーション基本情報

キーワード	キー	U値 (incl bridging) (W/m2K)	CM (KJ/K)
構造	Project flat roof	0.249	32.614
構造	Project external floor	0.25	6.294
構造	Uninsulated Semi-exposed wall Lightweight	2.547	11.7
構造	Project internal floor Reversed	4.73	176.4
構造	Project internal floor	3.553	176.4

建物 データ	数値
建物 使用フロア面積 (m2)	155.9
建物 体積 (m3)	545.66
建物 外部面積 (m2)	421.32
建物 外部表面積/体積 (m-1)	0.772

## 4. 納品物品

- ・ 本報告書
- ・ DesignBuilderデータ

Rchouse.dsb



東京 / 大阪 / 名古屋 / 福岡 / 宮崎  
NZ / UK / シドニー / 上海

Roadサポートグループ 今泉潤  
〒153-0051 東京都目黒区上目黒2-1中目黒GTタワー15F  
TEL.03-5773-1888 FAX.03-5720-5688  
E-MAIL: road@forum8.co.jp